

PrO-Research

a division of

CENTURION
SCIENTIFIC LIMITED



Research,
Pharmaceuticals
& Universities

Welcome

to our latest Centrifuge range

Centrifuges focused on the future

Micro, small, medium, large & floor ambient with additional refrigerated versions.

New tablet control & up to 10 metres.

Improved rotors for safer sample use

Additional rotors, fixed angles, high speed fixed angles, swing out and micro.

Fixed angle rotors are now supplied with sealed lids, for ultimate safety.

Swing out rotors also have new sealed lids to increase their capacity.

Next generation components

Inverter

Power efficient with added power (33% better acceleration and deceleration)

• Tachometer

Third generation electronics for superior longevity

• Control Board

Easier rotor selection.

Bluetooth addition allowing latest software updates

• Imbalance system

Third generation

• Lid Lock system Superior lid locks for safety and reliability

Centurion Scientific Ltd Centrifuges comply to all relevant EU standards of quality and medical devices IEC61010 and CE conformity test marks emission, immunity to EN/IEC 61326-1, Class B

Contents

3

Micro Centrifuges to 0.2L

K1015 Ambient & K1015R. Refrigerated	Selection of rotors available	4
K115A Ambient & K115RA. Refrigerated	Complete with Micro Rotor	12
K106A Ambient & K106RA. Refrigerated	Complete with Fixed angle rotor	14
K113 Ambient Haematocrit centrifuge	Complete with Haematocrit rotor	16
K104SO Ambient Centrifuge	Complete with swing out rotor	17

Small Centrifuges to 0.5L

K2015 Ambient & K2015R. Refrigerated	Selection of rotors available	18
K204A Ambient & K204RA. Refrigerated	Complete with Swing out rotor	29
K206A Ambient & K206RA. Refrigerated	Complete with Fixed angle rotor	32

Medium Centrifuges to 1L

K241 Ambient & K241R. Refrigerated	Selection of rotors available	34
K404A Ambient & K404RA. Refrigerated	Complete with Swing out rotor	45
K406A Ambient & K406RA. Refrigerated	Complete with Fixed angle rotor	48

Large Centrifuges to 2L

K242 Ambient & K242R. Refrigerated	Selection of rotors available	50
K504A Ambient & K504RA. Refrigerated	Complete with Swing out rotor	59

Large Centrifuges to 3L

K243 Ambient & K243R. Refrigerated	Selection of rotors available	62
K704A Ambient & K704RA. Refrigerated	Complete with Swing out rotor	73

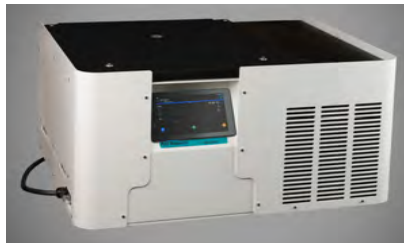
Floor Centrifuges to 4L

K2FS4 Ambient & K2FS4R. Refrigerated	Selection of rotors available	76
KFS4A Ambient & KFS4RA. Refrigerated	Complete with Swing out rotor	85

Control by smart display.



From 200ml to 1000ml max



To 2000ml to 4000ml max & floor models

Full colour display with HD graphics , showing sharp and clear display of all user parameters . Use on the unit or at your desk up to 10 metres distance (Line of sight)
When display is placed upon the centrifuge display area full charging is in operation
see following page

Wireless charging

5



All Centrifuges have an induction coil fitted to the display area and clearly marked. Simply place the supplied smart display on the support pins and the display will charge automatically.
No plug in charge is required.

Micro Centrifuges to 0.2Litre max

Prime multi rotor Centrifuge

Display indicative only



PART NUMBERS

K1015 (230V50/60Hz)

1.K1015 (110V 60Hz)

(Rotor required) see the following pages

Display indicative only



PART NUMBERS

K1015R (230V 50Hz)

1.K1015R (110V 60 Hz)

2.K1015R (230V 60Hz)

(Rotor required) see the following pages

Ambient Centrifuge

Speed	15,000 Rpm max (1 Rpm steps)
Rcf Max	10 - 22,000G
Timer	0-9hours & Hold (1 sec steps)
Dims HWD	280 x 240 x 360mm
Weight	12.8 Kg (without rotor)
Power	125 Watts
Memory	99 programs
Accel rates	10 programs
Decel rates	10 programs

Refrigerated Centrifuge

Speed	15,000 Rpm max (1 Rpm steps)
Rcf Max	10 - 22,000G
Timer	0-9hours & Hold (1 sec steps)
Dims HWD	320 x 280 x 575mm
Weight	41.8 Kg (without rotor)
Power	575 Watts
Memory	99 programs
Accel rates	10 programs
Decel rates	10 programs
Temp range	-20C to 40C PID controlled to +/- 1C

Micro rotors to 22,000 Rcf (G)

7



Sealed lid included

Reducers pack of 4

Rotor	BRK5424, 5463 & 5464
Part number	RS04 (0.2- 0.4ml)
Tube size max	6 x 30mm
Part number	RS05 (0.5ml)
Tube size max	8 x 30mm



Rotor	BRK5424	BRK5436	BRK5448	BRK5494
Rotor type	24 x 2.2ml	36 x 0.5ml	48 x 0.2 to 0.4ml	4 x Pcr Strips
Tube size max	11 x 50mm	8 x 30mm	6 x 40mm	6 x 40mm
Minimum Rcf (G)	10	10	10	10
Maximum Rcf (G)	22,000	22,000	22,000	22,000
Maximum Rpm	15,000	15,000	15,000	15,000
Radius max cms	8.75cms	8.75cms	8.75cms	8.75cms
Sample tube angle °	45	45	45	45
Acceleration time (secs)	15	15	15	15
Deceleration time (secs)	15	15	15	15
Autoclavable (frequency)	121°C (10)	121°C (10)	121°C (10)	121°C (10)
Minimum Temperature @ 23°C	4°C	4°C	4°C	4°C

Rotor	BRK5463	BRK5464
Rotor type	36 x 2.2ml	118 x 2.2 & 18 x 0.5ml
Tube size max	11 x 50mm	11 x 50 & 8 x 30mm
Minimum Rcf (G)	10	10
Maximum Rcf (G)	22,000	22,000
Maximum Rpm	15,000	15,000
Radius max cms	8.75cms	8.75cms
Sample tube angle °	45	45
Acceleration time (secs)	15	15
Deceleration time (secs)	15	15
Autoclavable (frequency)	121°C (10)	121°C (10)
Minimum Temperature @ 23°C	4°C	4°C

Small Swing out Rotor 1520 Rcf (G)



BRK5508S Rotor Buckets supplied (set of 8)

Capacity	8 x 5ml
Tube size	13 x 82mm max
Minimum Rcf (G)	10
Maximum Rcf (G)	1,520
Maximum Speed	4,000
Radius max cms	8.5
Sample tube angle °	0
Acceleration time (secs)	15
Deceleration time (secs)	15
Autoclavable (frequency)	121°C (10)
Minimum Temperature @ 23°C	4°C

Small Fixed angle rotors. 3,500 & 6,100 Rcf (G)

9

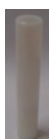


Sealed lid included

Rotor	BRK5407	BRK5408	BRK5404
Rotor type	4 x 15ml & 4 x 10ml	8 x 15ml tube	4 x 50ml tube
Tube size max	17 x 120mm & 13 x 110mm	17 x 120mm	30 x 115mm
Minimum Rcf (G)	10	10	10
Maximum Rcf (G)	6,100	3,500	3,500
Maximum Speed	8,000	6,000	6,000
Radius max cms	8.5	8.5	8.5
Sample tube angle °	30	30	30
Acceleration time (secs)	25	20	20
Deceleration time (secs)	25	20	20
Autoclavable (frequency)	121°C (10)	121°C (10)	121°C (10)
Minimum Temperature @ 23°C	4°C	4°C	4°C

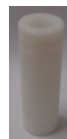
Reducers pack of 4

Rotor	BRK5407 / BRK5408 / 5404
Part number	RM05 (5ml)
Tube size max	13 x 80mm
Part number	RM10 (10ml)
Tube size max	16 x 100mm



Reducers pack of 4

Rotor	BRK5404
Part number	RM25 (25ml)
Tube size max	24 x 100mm
Part number	RM15 (15ml)
Tube size max	17 x 100mm



Cytology rotor to 550Rcf (G)



Rotor	4940 (4 Place)
Rotor type	4 x 0.2 to 6ml
Tube size max	Single or double
Minimum Rcf (G)	10
Maximum Rcf (G)	550
Maximum Speed	2,500
Radius max cms	7.9
Sample tube angle °	0
Acceleration time (secs)	20
Deceleration time (secs)	20
Autoclavable (frequency)	121°C (10)
Minimum Temperature @ 23°C	4°C

Cytology rotor includes Rotor, Sealed Lid, Clips, 24 holders with filter card & 100 slides

Accessories



4446

Double sample holder with card (up to 1ml)



4444

Single sample holder with card (up to 1ml)



4600

Double sample holder with card (up to 6ml)



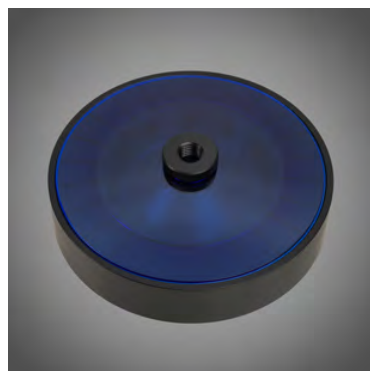
4462

Stainless steel clips

Haematocrit & Micro rotor to 15,800 Rcf (G)

11

Rotor	BRK5401
Rotor type Tube size max	24 x capillary & 12 x 2ml
Tube size	2 x 75mm & 11 x 40mm
Minimum Rcf (G)	10
Maximum Rcf (G)	15,800
Maximum Rpm	13,000
Radius max cms	8.4
Sample tube angle °	0 & 60
Acceleration time (secs)	20
Deceleration time (secs)	20
Autoclavable (frequency)	121°C (10)
Minimum Temperature @ 23°C	4°C



Consumables

Part Number	Description
8012	Plain Capillary tubes pack 10 x 100
8013	Heparanised Capillary tubes pack 10 x 100
8014	Sealing Clay Pk 10
8011	Rim seal Gasket Pk 10 Replace regularly every 2 months

Accessories

Part Number	Description
8003	PCV Reader

Micro Centrifuges to 0.2Litre max

Dual Rotor Centrifuges Complete with rotor



PART NUMBERS (230V50/60HZ)

K115A with BRK5424 rotor
K115B with BRK5436 rotor
K115C with BRK5448 rotor
K115D with BRK5494 rotor



PART NUMBERS (230V 50HZ)

KR115A with BRK5424 rotor
KR115B with BRK5436 rotor
KR115C with BRK5448 rotor
KR115D with BRK5494 rotor

Ambient Centrifuge

Speed	15,000 Rpm max (1 Rpm steps)
Rcf Max	10 - 22,000G
Timer	0-9hours & Hold (1 sec steps)
Dims HWD	280 x 240 x 360mm
Weight	12.8 Kg (without rotor)
Power	125 Watts
Memory	99 programs
Accel rates	10 programs
Decel rates	10 programs

PART NUMBERS (110V 60HZ)

1.K115A with BRK5424 rotor
1.K115B with BRK5436 rotor
1.K115C with BRK5448 rotor
1.K115D with BRK5494 rotor

Refrigerated Centrifuge

Speed	15,000 Rpm max (1 Rpm steps)
Rcf Max	10 - 22,000G
Timer	0-9hours & Hold (1 sec steps)
Dims HWD	320 x 280 x 575mm
Weight	41.8 Kg (without rotor)
Power	575 Watts
Memory	99 programs
Accel rates	10 programs
Decel rates	10 programs
Temp range	-20C to 40C PID controlled to +/- 1C

PART NUMBERS (110V 60HZ)

1. KR115A with BRK5424 rotor
1. KR115B with BRK5436 rotor
1. KR115C with BRK5448 rotor
1. KR115D with BRK5494 rotor

PART NUMBERS (230V 60HZ)

2. KR115A with BRK5424 rotor
2. KR115B with BRK5436 rotor
2. KR115C with BRK5448 rotor
2. KR115D with BRK5494 rotor

Micro rotors to 22,000 Rcf (G)



Sealed lid included

Rotor	BRK5424	BRK5436	BRK5448	BRK5494
Rotor type	24 x 2.2ml	36 x 0.5ml	48 x 0.2 to 0.4ml	4 x Pcr Strips
Tube size max	11 x 50mm	8 x 30mm	6 x 40mm	6 x 40mm
Minimum Rcf (G)	10	10	10	10
Maximum Rcf (G)	22,000	22,000	22,000	22,000
Maximum Rpm	15,000	15,000	15,000	15,000
Radius max cms	8.75cms	8.75cms	8.75cms	8.75cms
Sample tube angle °	45	45	45	45
Acceleration time (secs)	15	15	15	15
Deceleration time (secs)	15	15	15	15
Autoclavable (frequency)	121°C (10)	121°C (10)	121°C (10)	121°C (10)
Minimum Temperature @ 23°C	4°C	4°C	4°C	4°C

Reducers pack of 4

Rotor	BRK5424
Part number	RS04 (0.2- 0.4ml)
Tube size max	6 x 30mm
Part number	RS05 (0.5ml)
Tube size max	8 x 30mm



Micro Centrifuges to 0.2Litre max

Dual Rotor Centrifuges Complete with rotor



Ambient Centrifuge

Speed	6,000 Rpm max (1 Rpm steps)
Rcf Max	10 - 3,500 G
Timer	0-9hours & Hold (1 sec steps)
Dims HWD	280 x 240 x 360mm
Weight	12.8 Kg (without rotor)
Power	125 Watts
Memory	99 programs
Accel rates	10 programs
Decel rates	10 programs

PART NUMBERS (230V 50/60HZ)

K106A with BRK5408 rotor
K106B with BRK5404 rotor

PART NUMBERS (110V 60HZ)

1. K106A with BRK5408 rotor
1. K106B with BRK5404 rotor



Refrigerated Centrifuge

Speed	6,000 Rpm (1 Rpm steps)
Rcf Max	10 - 3,500 G
Timer	0-9hours & Hold (1 sec steps)
Dims HWD	320 x 280 x 575mm
Weight	41.8 Kg (without rotor)
Power	575 Watts
Memory	99 programs
Accel rates	10 programs
Decel rates	10 programs
Temp range	-20C to 40C PID controlled to +/- 1C

PART NUMBERS (230V 50HZ)

KR106A with BRK5408 rotor
KR106B with BRK5404 rotor

PART NUMBERS (110V 60HZ)

1. KR106A with BRK5408 rotor
1. KR106B with BRK5404 rotor

PART NUMBERS (230V 60HZ)

2. KR106A with BRK5408 rotor
2. KR106B with BRK5404 rotor

Small Fixed angle rotors. 3,500 Rcf (G)

15

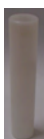


Sealed Lid included

Rotor	BRK5408	BRK5404
Rotor type	8 x 15ml tube	4 x 50ml tube
Tube size max	17 x 120mm	30 x 115mm
Minimum Rcf (G)	10	10
Maximum Rcf (G)	3,500	3,500
Maximum Speed	6,000	6,000
Radius max cms	8.5	8.5
Sample tube angle °	30	30
Acceleration time (secs)	20	20
Deceleration time (secs)	20	20
Autoclavable (frequency)	121°C (10)	121°C (10)
Minimum Temperature @ 23°C	4°C	4°C

Reducers pack of 4

Rotor	BRK5408/5404
Part number	RM05 (5ml)
Tube size max	13 x 80mm
Part number	RM10 (10ml)
Tube size max	16 x 100mm



Reducers pack of 4

Rotor	BRK5404
Part number	RM25 (25ml)
Tube size max	24 x 100mm
Part number	RM15 (15ml)
Tube size max	17 x 100mm



Micro Centrifuge with Haematocrit rotor

Dual Rotor Centrifuge Complete with rotor

Display indicative only



Ambient Centrifuge

Speed	13,000 Rpm max (1 Rpm steps)
Rcf Max	10 - 15,800 G
Timer	0-9hours & Hold (1 sec steps)
Dims HWD	280 x 240 x 360mm
Weight	12.8 Kg (without rotor)
Power	125 Watts
Memory	99 programs
Accel rates	10 programs
Decel rates	10 programs

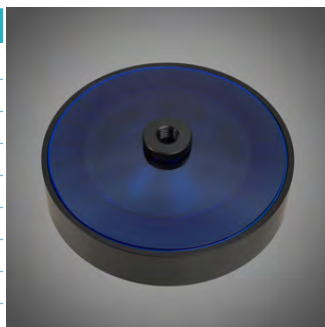
PART NUMBERS

K113 (230V50/60Hz)

PART NUMBERS

1.K113 (110V 60Hz)

Rotor	BRK5401
Rotor type	24 x capillary & 12 x 2ml
Tube size max	2 x 75mm & 11 x 40mm
Minimum Rcf (G)	10
Maximum Rcf (G)	15,800
Maximum Speed	13,000
Radius max cms	8.4
Sample tube angle °	0 & 60
Acceleration time (secs)	20
Deceleration time (secs)	20
Autoclavable (frequency)	121°C (10)
Minimum Temperature @ 23°C	4°C



See Page 9 for consumables

Micro Centrifuge with Swing out rotor

Dual Rotor Centrifuge Complete with rotor

17

Display indicative only



Ambient Centrifuge

Speed	4,000 Rpm max (1 Rpm steps)
Rcf Max	10 - 1500 G
Timer	0-9hours & Hold (1 sec steps)
Dims HWD	280 x 240 x 360mm
Weight	12.8 Kg (without rotor)
Power	125 Watts
Memory	99 programs
Accel rates	10 programs
Decel rates	10 programs

PART NUMBERS

K106A (230V50/60Hz)

PART NUMBERS

1.K106A (110V 60Hz)

BRK5508S Swing out rotor

Capacity	8 x 5ml
Tube size	13 x 82mm max
Minimum Rcf (G)	10
Maximum Rcf (G)	1,500
Maximum Speed	4,000
Radius max cms	9.0
Sample tube angle °	0
Acceleration time (secs)	15
Deceleration time (secs)	15
Autoclavable (frequency)	121°C (10)
Minimum Temperature @ 23°C	4°C



Small Centrifuges to 0.5Litre max

Prime Multi Rotor Centrifuges

Display indicative only



PART NUMBERS

K2015 (230V50/60Hz)

1.K2015 (110V 60Hz)

(Rotor required) see the following pages

Display indicative only



PART NUMBERS

K2015R (230V 50Hz)

1.K2015R (110V 60 Hz)

2.K2015R (230V 60Hz)

(Rotor required) see the following pages

Ambient Centrifuge

Speed	15,000 Rpm max (1 Rpm steps)
Rcf Max	10 - 22,000 G
Timer	0-9hours & Hold (1 sec steps)
Dims HWD	320 x 350 x 470mm
Weight	22.8 Kg (without rotor)
Power	175 Watts
Memory	99 programs
Accel rates	10 programs
Decel rates	10 programs

Refrigerated Centrifuge

Speed	15,000 Rpm (1 Rpm steps)
Rcf Max	10 - 22,000 G
Timer	0-9hours & Hold (1 sec steps)
Dims HWD	325 x 360 x 610mm
Weight	45.8 Kg (without rotor)
Power	575 Watts
Memory	99 programs
Accel rates	10 programs
Decel rates	10 programs
Temp range	-20C to 40C PID controlled to +/- 1C

Medium fixed angle rotors to 3,800 Rcf (G)

19



Sealed lid included

Rotor	BRK5412	BRK5406
Rotor type	12 x 15ml	6 x 50m
Tube size max	17 x 120mm	30 x 120mm
Minimum Rcf (G)	10	10
Maximum Rcf (G)	3,800	3,800
Maximum Speed	6,000	6,000
Radius max cms	9.5	9.5
Sample tube angle °	30	30
Acceleration time (secs)	20	20
Deceleration time (secs)	20	20
Autoclavable (frequency)	121°C (10)	121°C (10)
Minimum Temperature @ 23°C	4°C	4°C

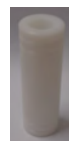
Reducers pack of 4

Rotor	BRK5412
Part number	RM05 (5ml)
Tube size max	13 x 80mm
Part number	RM10 (10ml)
Tube size max	16 x 100mm



Reducers pack of 4

Rotor	BRK5406
Part number	RM15 (15ml)
Tube size max	17 x 120mm
Part number	RM25 (25ml)
Tube size max	25 x 100mm



Swing out Rotor 4 x 125ml Max. 2,200 Rcf (G)

BRK5506

500ml max capacity



Adaptors (set 4) REQUIRED 125ml max (see Adaptor chart) B5519 Sealed Lids (set 4) Optional

Rotor	BRK5506 & Adaptors (set 4) see chart
Tube size max	45 x 100mm
Minimum Rcf (G)	10
Maximum Rcf (G)	2,200
Maximum Speed	4,000Rpm
Radius max cms	12.3cm
Sample tube angle °	0
Acceleration time (secs)	20
Deceleration time (secs)	20
Autoclavable (frequency)	121°C (20)
Minimum Temperature @ 23°C	4°C

Adaptors for Swing out rotor BRK5506 Pack of 4

Capacity **Size. mm** **Part Number** **Tubes per rotor**

Tube type: Micro with cap. Shape: Point

0.5ml	8 x 20	AM405-5	52
1.5ml	11 x 38	AM420-5	36
2.0ml	11 x 38	AM420-5	36
0.2ml	6 x 20	AM402-5	96
0.4ml	6 x 30	AM404-5	96

Tube type: Plain no cap. Shape: Round

1ml	6 x 45	AR401-5	36
3ml	10 x 60	AR403-5	28
5ml	12 x 75	AR405-5	20
6ml	12 x 82	AR405-5	20
7ml	12 x 100	AR407-5	20
9/10ml	14 x 100	AR409-5	20
15ml	17 x 100	AR415-5	16
25ml	24 x 100	AR425-5	12
50ml	34 x 100	AR450-5	4
100ml	45 x 100	AR4100-5	4
125ml	52 x 100	AR4125-5	4

Tube type: Falcon with cap. Shape: Point

15ml	17 x 120	AF415-5	4
50ml	29 x 115	AF450-5	4

Tube type: Falcon with cap. Shape: Square

12ml	17 x 100	AFS412-5	8
15ml	17 x 120	AFS415-5	4
25ml	25 x 90	AFS425-5	4
30ml	25 x 110	AFS430-5	4
50ml	29 x 115	AFS450-5	4

Tube type: Nalgene. Oakridge with cap. Shape: Round

10ml	15 x 80	ANO410-5	12
30ml	26 x 95	ANO430-5	4
50ml	29 x 107	ANO450-5	4
100ml	38 x 106	ANO485-5	R

Tube type: Monovette. Shape Square

1.1-1.4ml	8 x 82	AM4014-5	40
2.7-3ml	11 x 82	AM403-5	40
2.6-2.9ml	13 x 81	AM429-5	28
4.5-5ml	11 x 108	AM403-5	32
7.5-8.2ml	13 x 106	AM479-5	24
4.5-5ml	15 x 92	AM450-5	20
9-10ml	16 X 108	AM490-5	16

Tube type: Vacutainer. Shape: Round

1.6-5ml	13 x 82	AV416-5	24
4-7ml	13 x 106	AV450-5	24
7-9ml	15 x 92	AV470-5	20
8.5-10ml	16 x 108	AV480-5	16

Tube type: Vacuette. Shape: Round

1.6-5ml	13 x 82	AV416-5	24
4-7ml	13 x 106	AV450-5	24
7-9ml	15 x 92	AV470-5	20
8.5-10ml	16 x 108	AV480-5	16



Micro rotors to 22,000 Rcf (G)



Sealed lid included

Rotor	BRK5424	BRK5436	BRK5448	BRK5494
Rotor type	24 x 2.2ml	36 x 0.5ml	48 x 0.2 to 0.4ml	4 x Pcr Strips
Tube size max	11 x 50mm	8 x 30mm	6 x 40mm	6 x 40mm
Minimum Rcf (G)	10	10	10	10
Maximum Rcf (G)	22,000	22,000	22,000	22,000
Maximum Rpm	15,000	15,000	15,000	15,000
Radius max cms	8.75cms	8.75cms	8.75cms	8.75cms
Sample tube angle °	45	45	45	45
Acceleration time (secs)	15	15	15	15
Deceleration time (secs)	15	15	15	15
Autoclavable (frequency)	121°C (10)	121°C (10)	121°C (10)	121°C (10)
Minimum Temperature @ 23°C	4°C	4°C	4°C	4°C

Reducers pack of 4

Rotor	BRK5424
Part number	RS04 (0.2- 0.4ml)
Tube size max	6 x 30mm
Part number	RS05 (0.5ml)
Tube size max	8 x 30mm



Micro rotors High Capacity to 17,800 Rcf (G)

23



Sealed lid included

Rotor	BRK5648	BRK5649	BRK5698
Rotor type	48 x 2.2ml	24x2.2 & 24x0.5ml	8 x Pcr Strips
Tube size max	11 x 50mm	11x50 & 6x30mm	6 x 40mm
Minimum Rcf (G)	10	10	10
Maximum Rcf (G)	17,800	17,800	17,800
Maximum Speed	13,000	13,000	13,000
Radius max cms	9.45cms	9.45cms	9.45cms
Sample tube angle °	45	45	30
Acceleration time (secs)	20	20	20
Deceleration time (secs)	20	20	20
Autoclavable (frequency)	121°C (10)	121°C (10)	121°C (10)
Minimum Temperature @ 23°C	4°C	4°C	4°C

Reducers pack of 4

Rotor	BRK5648.BRK5649
Part number	RS04 (0.2- 0.4ml)
Tube size max	6 x 30mm
Part number	RS05 (0.5ml)
Tube size max	8 x 30mm



High speed Fixed angle rotors to 9,500 Rcf (G)



Sealed Lid included

Rotor	BRK5207	BRK5208	BRK5204
Rotor type	4 x 15ml & 4 x 10ml	8 x 15ml tube	4 x 50ml tube
Tube size max	17 x 120mm & 13 x 110mm	17 x 120mm	30 x 115mm
Minimum Rcf (G)	10	10	10
Maximum Rcf (G)	9,500	9,500	9,500
Maximum Speed	10,000	10,000	10,000
Radius max cms	8.5	8.5	8.5
Sample tube angle °	30	30	30
Acceleration time (secs)	25	25	25
Deceleration time (secs)	25	25	25
Autoclavable (frequency)	121°C (10)	121°C (10)	121°C (10)
Minimum Temperature @ 23°C	4°C	4°C	4°C

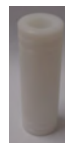
Reducers pack of 4

Rotor	BRK5207 / BRK5208/5204
Part number	RM05 (5ml)
Tube size max	13 x 80mm
Part number	RM10 (10ml)
Tube size max	16 x 100mm



Reducers pack of 4

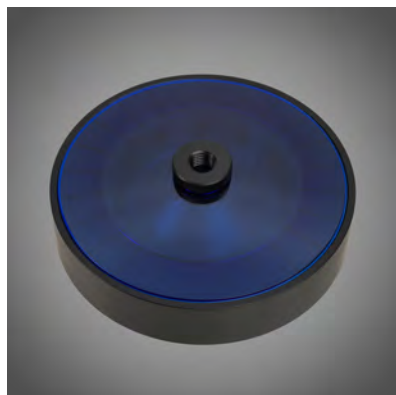
Rotor	BRK5204
Part number	RM25 (25ml)
Tube size max	24 x 100mm
Part number	RM15 (15ml)
Tube size max	17 x 100mm



Haematocrit & Micro rotor to 15,800 Rcf (G)

25

Rotor	BRK5401
Rotor type Tube size max	24 x capillary & 12 x 2ml
Tube size	2 x 75mm & 11 x 40mm
Minimum Rcf (G)	10
Maximum Rcf (G)	15,800
Maximum Rpm	13,000
Radius max cms	8.4
Sample tube angle °	0 & 60
Acceleration time (secs)	20
Deceleration time (secs)	20
Autoclavable (frequency)	121°C (10)
Minimum Temperature @ 23°C	4°C



Consumables

Part Number	Description
8012	Plain Capillary tubes pack 10 x 100
8013	Heparanised Capillary tubes pack 10 x 100
8014	Sealing Clay Pk 10
8011	Rim seal Gasket Pk 10 Replace regularly every 2 months

Accessories

Part Number	Description
8003	PCV Reader

Microtiter Plate Rotor 4 x Standard or 2 x High Plates



Rotor	BRK5740
Buckets	Complete with buckets Available with 4 x STD Plates
Rotor type Tube size max	85mmx128mm
Minimum Rcf (G)	10
Maximum Rcf (G)	1700
Maximum Rpm	3500
Radius max cms	12.4
Sample tube angle °	0°C (10)
Acceleration time (secs)	20
Deceleration time (secs)	20
Autoclavable (frequency)	121°C (10)
Minimum Temperature @ 23°C	4°C



Small Swing out Rotor 2200 Rcf (G)

27



BRK5508M Rotor Buckets supplied (set of 8)

Capacity Tube size max	8 x 10ml
Maximum tube size	15 x 115mm max
Minimum Rcf (G)	10
Maximum Rcf (G)	2,200
Maximum Speed	4,000
Radius max cms	12.3
Sample tube angle °	0
Acceleration time (secs)	20
Deceleration time (secs)	20
Autoclavable (frequency)	121°C (10)
Minimum Temperature @ 23°C	4°C

Cytology rotors to 500Rcf (G)



Rotor	4460 (12 Place)
Rotor type	12 x 0.2 to 6ml
Tube size max	Single or double
Minimum Speed Rpm	200
Maximum Speed Rpm	2,000
Maximum Rcf (G)	500
Radius max cms	11.2
Sample tube angle °	0
Acceleration time (secs)	25
Deceleration time (secs)	25
Autoclavable (frequency)	121°C (10)
Minimum Temperature @ 23°C	4°C

Accessories


4446

Double sample holder with card (up to 1ml)


4444

Single sample holder with card (up to 1ml)


4600

Double sample holder with card (up to 6ml)


4462

Stainless steel clips

Small Centrifuges to 0.5Litre max

Dual Rotor Centrifuge Complete with rotor

29

Display indicative only



PART NUMBERS

K204A (230V50/60Hz)
1.K204A (110V 60Hz)

Display indicative only



PART NUMBERS

KR204A (230V 50Hz)
1.KR204A (110V 60 Hz)
2.KR204A (230V 60Hz)

(Rotor required) see the following page
Also select 1 set of adaptor's (required)

Ambient Centrifuge

Speed	4,000 Rpm max (1 Rpm steps)
Rcf Max	10 - 2,200 G
Timer	0 -9hours & Hold (1 sec steps)
Dims HWD	320 x 350 x 470mm
Weight	22.8 Kg (without rotor)
Power	175 Watts
Memory	99 programs
Accel rates	10 programs
Decel rates	10 programs

Refrigerated Centrifuge

Speed	4,000 Rpm max (1 Rpm steps)
Rcf Max	10 - 2,200 G
Timer	0 -9hours & Hold (1 sec steps)
Dims HWD	325 x 360 x 610mm
Weight	45.8 Kg (without rotor)
Power	575 Watts
Memory	99 programs
Accel rates	10 programs
Decel rates	10 programs
Temp range	-20C to 40C PID controlled to +/- 1C

Swing out Rotor 4 x 125ml Max. 2,200 Rcf (G)

BRK5506

500ml max capacity



Optional B5519 sealed lids available see page 38

Adaptors (set 4) REQUIRED 125ml max (see Adaptor chart) B5519 Sealed Lids (set 4) Optional

Rotor	BRK5506 & Adaptors (set 4) see chart
Tube size max	45 x 100mm
Minimum Rcf (G)	10
Maximum Rcf (G)	2,200
Maximum Speed	4,000Rpm
Radius max cms	12.3cm
Sample tube angle °	0
Acceleration time (secs)	20
Deceleration time (secs)	20
Autoclavable (frequency)	121°C (20)
Minimum Temperature @ 23°C	4°C

Adaptors for Swing out rotor BRK5506 Pack of 4

Capacity **Size. mm** **Part Number** **Tubes per rotor**

Tube type: Micro with cap. Shape: Point

0.5ml	8 x 20	AM405-5	52
1.5ml	11 x 38	AM420-5	36
2.0ml	11 x 38	AM420-5	36
0.2ml	6 x 20	AM402-5	96
0.4ml	6 x 30	AM404-5	96

Tube type: Plain no cap. Shape: Round

1ml	6 x 45	AR401-5	36
3ml	10 x 60	AR403-5	28
5ml	12 x 75	AR405-5	20
6ml	12 x 82	AR405-5	20
7ml	12 x 100	AR407-5	20
9/10ml	14 x 100	AR409-5	20
15ml	17 x 100	AR415-5	16
25ml	24 x 100	AR425-5	12
50ml	34 x 100	AR450-5	4
100ml	45 x 100	AR4100-5	4
125ml	52 x 100	AR4125-5	4

Tube type: Falcon with cap. Shape: Point

15ml	17 x 120	AF415-5	4
50ml	29 x 115	AF450-5	4

Tube type: Falcon with cap. Shape: Square

12ml	17 x 100	AFS412-5	8
15ml	17 x 120	AFS415-5	4
25ml	25 x 90	AFS425-5	4
30ml	25 x 110	AFS430-5	4
50ml	29 x 115	AFS450-5	4

Tube type: Nalgene. Oakridge with cap. Shape: Round

10ml	15 x 80	ANO410-5	12
30ml	26 x 95	ANO430-5	4
50ml	29 x 107	ANO450-5	4
100ml	38 x 106	ANO485-5	R

Tube type: Monovette. Shape Square

1.1-1.4ml	8 x 82	AM4014-5	40
2.7-3ml	11 x 82	AM403-5	40
2.6-2.9ml	13 x 81	AM429-5	28
4.5-5ml	11 x 108	AM403-5	32
7.5-8.2ml	13 x 106	AM479-5	24
4.5-5ml	15 x 92	AM450-5	20
9-10ml	16 X 108	AM490-5	16

Tube type: Vacutainer. Shape: Round

1.6-5ml	13 x 82	AV416-5	24
4-7ml	13 x 106	AV450-5	24
7-9ml	15 x 92	AV470-5	20
8.5-10ml	16 x 108	AV480-5	16

Tube type: Vacuette. Shape: Round

1.6-5ml	13 x 82	AV416-5	24
4-7ml	13 x 106	AV450-5	24
7-9ml	15 x 92	AV470-5	20
8.5-10ml	16 x 108	AV480-5	16



Small Centrifuges to 0.5Litre max

Dual Rotor Centrifuge complete with rotor



Ambient Centrifuge

Speed	6,000 Rpm max (1 Rpm steps)
Rcf Max	10 - 3,800 G
Timer	0-9hours & Hold (1 sec steps)
Dims HWD	320 x 350 x 470mm
Weight	22.8 Kg (without rotor)
Power	175 Watts
Memory	99 programs
Accel rates	10 programs
Decel rates	10 programs

PART NUMBERS (230V 50/60HZ)

K206A with BRK5412 rotor
K206B with BRK5406 rotor

PART NUMBERS (110V 60HZ)

1.K206A with BRK5412 rotor
1.K206B with BRK5406 rotor



Refrigerated Centrifuge

Speed	6,000 Rpm (1 Rpm steps)
Rcf Max	10 - 3,800 G
Timer	0-9hours & Hold (1 sec steps)
Dims HWD	325 x 360 x 610mm
Weight	45.8 Kg (without rotor)
Power	575 Watts
Memory	99 programs
Accel rates	10 programs
Decel rates	10 programs
Temp range	-20C to 40C PID controlled to +/- 1C

PART NUMBERS (230V 50HZ)

KR206A with BRK5412 rotor
KR206B with BRK5406 rotor

PART NUMBERS (110V 60HZ)

1. KR206A with BRK5412 rotor
1. KR206B with BRK5406 rotor

PART NUMBERS (230V 60HZ)

2. KR206A with BRK5412 rotor
2. KR206B with BRK5406 rotor

Medium fixed angle rotors to 3,800 Rcf (G)

33

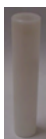


Sealed lid included

Rotor	BRK5412	BRK5406
Rotor type	12 x 15ml	6 x 50m
Tube size max	17 x 120mm	30 x 120mm
Minimum Rcf (G)	10	10
Maximum Rcf (G)	3,800	3,800
Maximum Speed	4,000	4,000
Radius max cms	9.5	9.5
Sample tube angle °	30	30
Acceleration time (secs)	20	20
Deceleration time (secs)	20	20
Autoclavable (frequency)	121°C (10)	121°C (10)
Minimum Temperature @ 23°C	4°C	4°C

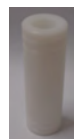
Reducers pack of 4

Rotor	BRK5412
Part number	RM05 (5ml)
Tube size max	13 x 80mm
Part number	RM10 (10ml)
Tube size max	16 x 100mm



Reducers pack of 4

Rotor	BRK5406
Part number	RM15 (15ml)
Tube size max	17 x 120mm
Part number	RM25 (25ml)
Tube size max	25 x 100mm



Medium Centrifuges to 1.0Litre max

Prime Multi Centrifuge

Display indicative only



PART NUMBERS

K241 (230V50/60Hz)

1.K241 (110V 60Hz)

(Rotor required) see the following



PART NUMBERS

K241R (230V 50Hz)

1.K241R (110V 60 Hz)

2.K241R (230V 60Hz)

(Rotor required) see the following pages

Ambient Centrifuge

Speed	15,000 Rpm max (1 Rpm steps)
Rcf Max	10 - 24,000 G
Timer	0-9hours & Hold (1 sec steps)
Dims HWD	340 x 400 x 520mm
Weight	25.8 Kg (without rotor)
Power	275 Watts
Memory	99 programs
Accel rates	10 programs
Decel rates	10 programs

Refrigerated Centrifuge

Speed	15,000 Rpm max (1 Rpm steps)
Rcf Max	10 - 24,000 G
Timer	0-9hours & Hold (1 sec steps)
Dims HWD	330 x 435 x 650mm
Weight	57.8 Kg (without rotor)
Power	625 Watts
Memory	99 programs
Accel rates	10 programs
Decel rates	10 programs
Temp range	-20C to 40C PID controlled to +/- 1C

Micro rotors to 22,000 Rcf (G)



Sealed lid included

Rotor	BRK5424	BRK5436	BRK5448	BRK5494
Rotor type	24 x 2.2ml	36 x 0.5ml	48 x 0.2 to 0.4ml	4 x Pcr Strips
Tube size max	11 x 50mm	8 x 30mm	6 x 40mm	6 x 40mm
Minimum Rcf (G)	10	10	10	10
Maximum Rcf (G)	22,000	22,000	22,000	22,000
Maximum Rpm	15,000	15,000	15,000	15,000
Radius max cms	8.75cms	8.75cms	8.75cms	8.75cms
Sample tube angle °	45	45	45	45
Acceleration time (secs)	15	15	15	15
Deceleration time (secs)	15	15	15	15
Autoclavable (frequency)	121°C (10)	121°C (10)	121°C (10)	121°C (10)
Minimum Temperature @ 23°C	4°C	4°C	4°C	4°C

Reducers

Rotor	BRK5424
Part number	RS04 (0.2- 0.4ml)
Tube size max	6 x 30mm
Part number	RS05 (0.5ml)
Tube size max	8 x 30mm



Micro rotors High capacity to 24,000 Rcf (G)



Sealed lid included

Rotor	BRK5248	BRK5249	BRK5298
Rotor type	48 x 2.2ml	24x2.2 & 24x0.5ml	8 x Pcr Strips
Tube size max	11 x 50mm	11x50 & 6x30mm	6 x 40mm
Minimum Rcf (G)	10	10	10
Maximum Rcf (G)	24,000	24,000	24,000
Maximum Speed	15,000	15,000	15,000
Radius max cms	9.45cms	9.45cms	9.45cms
Sample tube angle °	45	45	45
Acceleration time (secs)	20	20	20
Deceleration time (secs)	20	20	20
Autoclavable (frequency)	121°C (10)	121°C (10)	121°C (10)
Minimum Temperature @ 23°C	4°C	4°C	4°C

Reducers pack of 4

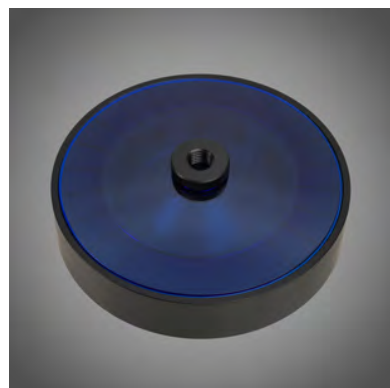
Rotor	BRK5248.BRK5249
Part number	RS04 (0.2- 0.4ml)
Tube size max	6 x 30mm
Part number	RS05 (0.5ml)
Tube size max	8 x 30mm



Haematocrit & Micro rotor to 15,800 Rcf (G)

37

Rotor	BRK5401
Rotor type Tube size max	24 x capillary & 12 x 2ml
Tube size	2 x 75mm & 11 x 40mm
Minimum Rcf (G)	10
Maximum Rcf (G)	15,800
Maximum Rpm	13,000
Radius max cms	8.4
Sample tube angle °	0 & 60
Acceleration time (secs)	20
Deceleration time (secs)	20
Autoclavable (frequency)	121°C (10)
Minimum Temperature @ 23°C	4°C



Consumables

Part Number	Description
8012	Plain Capillary tubes pack 10 x 100
8013	Heparanised Capillary tubes pack 10 x 100
8014	Sealing Clay Pk 10
8011	Rim seal Gasket Pk 10 Replace regularly every 2 months

Accessories

Part Number	Description
8003	PCV Reader

Swing out Rotor 4 x 250ml Max. 2,600 Rcf (G)

BRK1001

1 Litre max Capacity



B5251 Bucket (set 4) REQUIRED
250ml max per Bucket



Shown with optional B5519 sealed lids

Adaptors required see the following page

Rotor/Buckets	BRK1001. B5251 Buckets
Tube size max	62 x 100mm
Minimum Rcf (G)	10
Maximum Rcf (G)	2,600
Maximum Speed Rpm	4,000
Radius max cms	14.6cm
Sample tube angle °	0
Acceleration time (secs)	25
Deceleration time (secs)	25
Autoclavable (frequency)	121°C (20)
Minimum Temperature @ 23°C	4°C

Adaptors for Swing out rotor BRK1001. With B5251 buckets Pack of 4

Capacity Size. mm Part Number Tubes per rotor

Tube type: Micro with cap. Shape: Point

0.5ml	8 x 20	AM605-1	92
1.5ml	11 x 38	AM620-1	60
2.0ml	11 x 38	AM620-1	60
0.2ml	6 x 20	AM602-1	144
0.4ml	6 x 30	AM604-1	144

Tube type: Plain no cap. Shape: Round

1ml	6 x 45	AR601-1	36
3ml	10 x 60	AR603-1	28
5ml	12 x 75	AR605-1	20
6ml	12 x 82	AR605-1	20
7ml	12 x 100	AR607-1	20
9/10ml	14 x 100	AR609-1	20
15ml	17 x 100	AR615-1	16
25ml	24 x 100	AR625-1	12
50ml	34 x 100	AR650-1	4
100ml	45 x 100	AR6100-1	4
125ml	52 x 100	AR6150-1	4

Tube type: Falcon with cap. Shape: Point

15ml	17 x 120	AF615-1	16
50ml	29 x 115	AF650-1	4

Tube type: Falcon with cap. Shape: Square

12ml	17 x 100	AFS612-1	12
15ml	17 x 120	AFS615-1	12
25ml	25 x 90	AFS625-1	4
30ml	25 x 110	AFS630-1	4
50ml	29 x 115	AFS650-1	4

Tube type: Nalgene. Oakridge with cap. Shape: Round

10ml	15 x 80	ANO610-1	20
30ml	26 x 95	ANO630-1	4
50ml	29 x 107	ANO650-1	4
100ml	38 x 106	ANO685-1	4

Tube type: Nalgene. Oakridge with cap. Shape: Flat

250ml	62 x 125	AC62130	4
-------	----------	---------	---

Tube type: Monovette. Shape Square

1.1-1.4ml	8 x 82	AM6014-1	52
2.7-3ml	11 x 82	AM603-1	52
2.6-2.9ml	13 x 81	AM629-1	28
4.5-5ml	11 x 108	AM603-1	52
7.5-8.2ml	13 x 106	AM679-1	28
4.5-5ml	15 x 92	AM650-1	20
9-10ml	16 X 108	AM690-1	20

Tube type: Vacutainer. Shape: Round

1.6-5ml	13 x 82	AV616-1	28
4-7ml	13 x 106	AV650-1	28
7-9ml	15 x 92	AV670-1	16
8.5-10ml	16 x 108	AV680-1	16

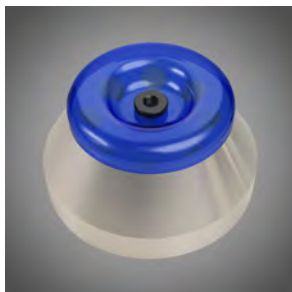
Tube type: Vacuette. Shape: Round

1.6-5ml	13 x 82	AV616-1	28
4-7ml	13 x 106	AV650-1	28
7-9ml	15 x 92	AV670-1	16
8.5-10ml	16 x 108	AV680-1	16



40

High speed fixed angle rotors to 10,600 Rcf (G)



Sealed lid included

Rotor	BRK5212	BRK5206
Rotor type	12 x 15ml	6 x 50m
Tube size max	17 x 120mm	30 x 120mm
Minimum Rcf (G)	10	10
Maximum Rcf (G)	10,600	10,600
Maximum Speed	10,000	10,000
Radius max cms	9.5	9.5
Sample tube angle °	30	30
Acceleration time (secs)	20	20
Deceleration time (secs)	25	25
Autoclavable (frequency)	121°C (10)	121°C (10)
Minimum Temperature @ 23°C	4°C	4°C

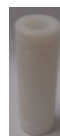
Reducers pack of 4

Rotor	BRK5212
Part number	RM05 (5ml)
Tube size max	13 x 80mm
Part number	RM10 (10ml)
Tube size max	16 x 100mm

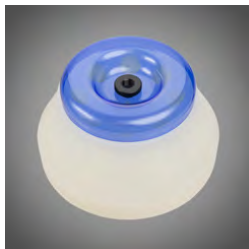


Reducers pack of 4

Rotor	BRK5206
Part number	RM15 (15ml)
Tube size max	17 x 120mm
Part number	RM25 (25ml)
Tube size max	25 x 100mm



Large fixed angle rotors to 4,800 Rcf (G)



Sealed lid included

Rotor	BRK5324	BRK5308	BRK5100
Rotor type	24 x 15ml	8 x 50ml	8 x Pcr Strips
Tube size max	17 x 120mm	30 x 120mm	6 x 40mm
Minimum Rcf (G)	10	10	10
Maximum Rcf (G)	4,800	4,800	4,800
Maximum Speed	6,000	6,000	6,000
Radius max cms	12	12	12
Sample tube angle °	30	30	30
Acceleration time (secs)	25	25	25
Deceleration time (secs)	25	25	25
Autoclavable (frequency)	121°C (10)	121°C (10)	121°C (10)
Refrigerated Centrifuges Only			
Minimum Temperature	4°C	4°C	4°C
At maximum speed (relative to room temperature at 23°C)			

Reducers Pack of 4

Rotor	BRK5324	BRK5308	BRK5100
Part number	RM05 (5ml)	RM15 (15ml)	RL10 (10ml)
Tube size max	13 x 80mm	17 x 120mm	16 x 100mm
Part number	RM10 (10ml)	RM25 (25ml)	RL25 (25ml)
Tube size max	16 x 100mm	25 x 100mm	25 x 100mm
			RL50 (50ml)
			35 x 110mm
			RL85 (85ml)
			39 x 110mm



Microtiter Plate Rotor 4 x Standard or 2 x High Plates



Rotor	BRK5540
	Complete with buckets
Rotor type Tube size max	Available with 4 x STD Plates 85mmx128mm
Minimum Rcf (G)	10
Maximum Rcf (G)	2500
Maximum Rpm	3500
Radius max cms	14
Sample tube angle °	0°C (10)
Acceleration time (secs)	20
Deceleration time (secs)	20
Autoclavable (frequency)	121°C (10)
Minimum Temperature @ 23°C	4°C



Small Swing out Rotor 2600 Rcf (G)

43



BRK5508L Rotor Buckets supplied (set of 8)

Capacity	8 x 15ml
Tube size	17 x 125mm max
Minimum Rcf (G)	10
Maximum Rcf (G)	2,600
Maximum Speed	4,000
Radius max cms	14.6
Sample tube angle °	0
Acceleration time (secs)	20
Deceleration time (secs)	20
Autoclavable (frequency)	121°C (10)
Minimum Temperature @ 23°C	4°C

Cytology rotors to 500Rcf (G)



Rotor	4460 (12 Place)
Rotor type	12 x 0.2 to 6ml
Tube size max	Single or double
Minimum Speed Rpm	200
Maximum Speed Rpm	2,000
Maximum Rcf (G)	500
Radius max cms	11.2
Sample tube angle °	0
Acceleration time (secs)	25
Deceleration time (secs)	25
Autoclavable (frequency)	121°C (10)
Minimum Temperature @ 23°C	4°C

Accessories



4446

Double sample holder with card (up to 1ml)



4444

Single sample holder with card (up to 1ml)



4600

Double sample holder with card (up to 6ml)



4462

Stainless steel clips

Medium Centrifuges to 1.0Litre max

Dual Rotor Centrifuges Complete with rotor

45

Display indicative only



PART NUMBERS

K404A (230V50/60Hz)
1.K404A (110V 60Hz)

Ambient Centrifuge

Speed	4,000 Rpm max (1 Rpm steps)
Rcf Max	10 - 2,600 G
Timer	0 -9hours & Hold (1 sec steps)
Dims HWD	340 x 400 x 520mm
Weight	25.8 Kg (without rotor)
Power	275 Watts
Memory	99 programs
Accel rates	10 programs
Decel rates	10 programs



PART NUMBERS

KR404A (230V 50Hz)
1.KR404A (110V 60 Hz)
2.KR404A (230V 60Hz)

Refrigerated Centrifuge

Speed	4,000 Rpm max (1 Rpm steps)
Rcf Max	10 - 2,600 G
Timer	0 -9hours & Hold (1 sec steps)
Dims HWD	330 x 435 x 650mm
Weight	57.8 Kg (without rotor)
Power	625 Watts
Memory	99 programs
Accel rates	10 programs
Decel rates	10 programs
Temp range	-20C to 40C PID controlled to +/- 1C

(Rotor required) see the following page

Swing out Rotor 4 x 250ml Max. 2,600 Rcf (G)

BRK1001

1 Litre max capacity

B5251 Bucket (set 4) REQUIRED.
250ml max per Bucket



Shown with optional B5519 sealed lids

Adaptors required see following page

Rotor/Buckets	BRK1001. B5251 Buckets
Tube size max	62 x 100mm
Minimum Rcf (G)	10
Maximum Rcf (G)	2,600
Maximum Speed Rpm	4,000
Radius max cms	14.6cm
Sample tube angle °	0
Acceleration time (secs)	25
Deceleration time (secs)	25
Autoclavable (frequency)	121°C (20)
Minimum Temperature @ 23°C	4°C

Adaptors for Swing out rotor BRK1001.

With B5251 buckets Pack of 4

Capacity	Size. mm	Part Number	Tubes per rotor
----------	----------	-------------	-----------------

Tube type: Micro with cap. Shape: Point

0.5ml	8 x 20	AM605-1	92
1.5ml	11 x 38	AM620-1	60
2.0ml	11 x 38	AM620-1	60
0.2ml	6 x 20	AM602-1	144
0.4ml	6 x 30	AM604-1	144

Tube type: Plain no cap. Shape: Round

1ml	6 x 45	AR601-1	36
3ml	10 x 60	AR603-1	28
5ml	12 x 75	AR605-1	20
6ml	12 x 82	AR605-1	20
7ml	12 x 100	AR607-1	20
9/10ml	14 x 100	AR609-1	20
15ml	17 x 100	AR615-1	16
25ml	24 x 100	AR625-1	12
50ml	34 x 100	AR650-1	4
100ml	45 x 100	AR6100-1	4
125ml	52 x 100	AR6150-1	4

Tube type: Falcon with cap. Shape: Point

15ml	17 x 120	AF615-1	16
50ml	29 x 115	AF650-1	4

Tube type: Falcon with cap. Shape: Square

12ml	17 x 100	AFS612-1	12
15ml	17 x 120	AFS615-1	12
25ml	25 x 90	AFS625-1	4
30ml	25 x 110	AFS630-1	4
50ml	29 x 115	AFS650-1	4

Tube type: Nalgene. Oakridge with cap. Shape: Round

10ml	15 x 80	ANO610-1	20
30ml	26 x 95	ANO630-1	4
50ml	29 x 107	ANO650-1	4
100ml	38 x 106	ANO685-1	4

Tube type: Nalgene. Oakridge with cap. Shape: Flat

250ml	62 x 125	AC62130	4
-------	----------	---------	---

Tube type: Monovette. Shape Square

1.1-1.4ml	8 x 82	AM6014-1	52
2.7-3ml	11 x 82	AM603-1	52
2.6-2.9ml	13 x 81	AM629-1	28
4.5-5ml	11 x 108	AM603-1	52
7.5-8.2ml	13 x 106	AM679-1	28
4.5-5ml	15 x 92	AM650-1	20
9-10ml	16 X 108	AM690-1	20

Tube type: Vacutainer. Shape: Round

1.6-5ml	13 x 82	AV616-1	28
4-7ml	13 x 106	AV650-1	28
7-9ml	15 x 92	AV670-1	16
8.5-10ml	16 x 108	AV680-1	16

Tube type: Vacuette. Shape: Round

1.6-5ml	13 x 82	AV616-1	28
4-7ml	13 x 106	AV650-1	28
7-9ml	15 x 92	AV670-1	16
8.5-10ml	16 x 108	AV680-1	16



Medium Centrifuges to 1.0Litre max

Dual Rotor Centrifuges Complete with rotor



Display indicative only

PART NUMBERS (230V 50/60HZ)

K406A with BRK5324 rotor
K406B with BRK5308 rotor
K406C with BRK5100 rotor



Ambient Centrifuge

Speed	6,000 Rpm max (1 Rpm steps)
Rcf Max	10 - 4,800 G
Timer	0-9hours & Hold (1 sec steps)
Dims HWD	340 x 400 x 520mm
Weight	25.8 Kg (without rotor)
Power	275 Watts
Memory	99 programs
Accel rates	10 programs
Decel rates	10 programs

PART NUMBERS (110V 60HZ)

1. K406A with BRK5324 rotor
1. K406B with BRK5308 rotor
1. K406C with BRK5100 rotor

Refrigerated Centrifuge

Speed	6,000 Rpm max (1 Rpm steps)
Rcf Max	10 - 4,800 G
Timer	0-9hours & Hold (1 sec steps)
Dims HWD	330 x 435 x 650mm
Weight	57.8 Kg (without rotor)
Power	625 Watts
Memory	99 programs
Accel rates	10 programs
Decel rates	10 programs
Temp range	-20C to 40C PID controlled to +/- 1C

PART NUMBERS (230V 50HZ)

KR406A with BRK5324 rotor
KR406B with BRK5308 rotor
KR406C with BRK5100 rotor

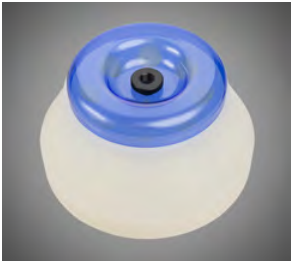
PART NUMBERS (110V 60HZ)

1. KR406A with BRK5324 rotor
1. KR406B with BRK5308 rotor
1. KR406C with BRK5100 rotor

PART NUMBERS (230V 60HZ)

2. KR406A with BRK5324 rotor
2. KR406B with BRK5308 rotor
2. KR406C with BRK5100 rotor

Large fixed angle rotors to 4,800 Rcf (G)



Sealed lid included

Rotor	BRK5324	BRK5308	BRK5100
Rotor type	24 x 15ml	8 x 50ml	6 x 100ml
Tube size max	17 x 120mm	30 x 120mm	45 x 125mm
Minimum Rcf (G)	10	10	10
Maximum Rcf (G)	4,800	4,800	4,800
Maximum Speed	6,000	6,000	6,000
Radius max cms	12	12	12
Sample tube angle °	30	30	30
Acceleration time (secs)	25	25	25
Deceleration time (secs)	25	25	25
Autoclavable (frequency)	121°C (10)	121°C (10)	121°C (10)
Refrigerated Centrifuges Only			
Minimum Temperature	4°C	4°C	4°C
At maximum speed (relative to room temperature at 23°C)			

Reducers pack of 4

Rotor	BRK5324	BRK5308	BRK5100
Part number	RM05 (5ml)	RM15 (15ml)	RL10 (10ml)
Tube size max	13 x 80mm	17 x 120mm	16 x 100mm
Part number	RM10 (10ml)	RM25 (25ml)	RL25 (25ml)
Tube size max	16 x 100mm	25 x 100mm	25 x 100mm
			RL50 (50ml)
			35 x 110mm
			RL85 (85ml)
			39 x 110mm



Large Centrifuges to 2L

Prime multi rotor Centrifuge

Display indicative only



K242 Large Centrifuge 2L

K242. (230V 50/60Hz). 1.K242. (110V 60Hz)

Speed	15,000 Rpm max (1 Rpm steps)
Rcf Max	10 - 24,000 G
Timer	0-9hours & Hold (1 sec steps)
Dims HWD	375 x 540 x 620mm
Weight	54.5 Kg (without rotor)
Power	750 Watts
Memory	99 programs
Accel rates	10 programs
Decel rates	10 programs



K242 Large Centrifuge with Trolley

Trolley available

Part number	XMFS2
Total height	98 cm

Large Centrifuges to 2L

Prime multi rotor Centrifuge

51



Display indicative only

K242R Large Centrifuge 2L Refrigerated

K242R.(230V 50Hz). 1.K242R.(110V 60Hz).
2.K242R.(230V 60Hz)

Speed	22,000 Rpm max (1 Rpm steps)
Rcf Max	10 - 24,000 G
Timer	0-9hours & Hold (1 sec steps)
Dims HWD	410 x 825 x 650mm
Weight	87Kg
Power	1200 Watts
Memory	99 programs
Accel rates	10 programs
Decel rates	10 programs
Temp range	-9°C to + 40°C PID Controlled to + / - 1°C

K242R Large Centrifuge with Trolley

Trolley available

Part number	XMRF52
Total height	98 cm

Swing out Rotor 4 x 500ml Max. 3,600 Rcf (G)

BRK3000

2 Litre max capacity



B2001 Bucket (set 4) REQUIRED .
500ml max per Bucket



Shown with optional B5319 sealed lids

Adaptors required see following page

Rotor/Buckets	BRK3000. B2001 Buckets
Tube size max	98 x 160mm
Minimum Rcf (G)	10
Maximum speed	4000Rpm
Maximum Rcf (G)	3600
Radius max cms	20.5
Sample tube angle °	0
Acceleration time (secs)	40
Deceleration time (secs)	40
Autoclavable (frequency)	121°C (20)
Minimum Temperature @ 23°C	4°C

Adaptors for Buckets. B2001 Pack of 4

Capacity **Size. mm** **Part Number** **Tubes per rotor**

Tube type: Micro with cap. Shape: Point

0.5ml	8 x 20	AM805-2	144
1.5ml	11 x 38	AM820-2	92
2.0ml	11 x 38	AM820-2	92
0.2ml	6 x 20	AM802-2	168
0.4ml	6 x 30	AM804-2	168

Tube type: Plain no cap. Shape: Round

1ml	6 x 45	AR801-2	168
3ml	10 x 60	AR803-2	96
5ml	12 x 75	AR805-2	96
6ml	12 x 82	AR805-2	96
7ml	12 x 100	AR807-2	96
9/10ml	14 x 100	AR809-2	84
15ml	17 x 100	AR815-2	48
25ml	24 x 100	AR825-2	28
50ml	34 x 100	AR850-2	16
100ml	45 x 100	AR8100-2	8
150ml	52 x 100	AR8150-2	4
250ml	62 x 100	AR8250-2	4

Tube type: Falcon with cap. Shape: Point

15ml	17 x 120	AF815-2	28
50ml	29 x 115	AF850-2	16
175ml	61 x 118	AF8175-2	4

Tube type: Falcon with cap. Shape: Square

12ml	17 x 100	AFS812-2	48
15ml	17 x 120	AFS815-2	28
25ml	25 x 90	AFS825-2	20
30ml	25 x 110	AFS830-2	16
50ml	29 x 115	AFS850-2	12

Tube type: Corning with cap. Shape: point

250ml	60 x 172	AF8250-2	4
500ml	98 x 148	AF8500-2	4

Tube type: Nalgene. Oakridge with cap. Shape: Round

10ml	15 x 80	ANO810-2	64
30ml	26 x 95	ANO830-2	20
50ml	29 x 107	ANO850-2	12
100ml	38 x 106	ANO885-2	12
250ml	62 x 133	ANO8250-2	4

Tube type: Nalgene. Oakridge with cap. Shape: Square

250ml	62 x 130	ANO8251-2	4
500ml	98 x 148	AH2695R	4 No lid

Tube type: Monovette. Shape Square

1.1-1.4ml	8 x 82	AM8014-2	96
2.7-3ml	11 x 82	AM803-2	76
2.6-2.9ml	13 x 81	AM829-2	68
4.5-5ml	11 x 108	AM803-2	76
7.5-8.2ml	13 x 106	AM879-2	68
4.5-5ml	15 x 92	AM850-2	64
9-10ml	16 X 108	AM890-2	64

Tube type: Vacutainer. Shape: Round also Vacuette

1.6-5ml	13 x 82	AV816-2	76
4-7ml	13 x 106	AV850-2	76
7-9ml	15 x 92	AV870-2	64
8.5-10ml	16 x 108	AV880-2	64



Microtiter Plate Rotor 4 x Standard or 2 x High Plates



Rotor	BRK5540
	Complete with buckets
Rotor type Tube size max	Available with 4 x STD Plates 85mmx128mm
Minimum Rcf (G)	10
Maximum Rcf (G)	2500
Maximum Rpm	3500
Radius max cms	14
Sample tube angle °	0°C (10)
Acceleration time (secs)	20
Deceleration time (secs)	20
Autoclavable (frequency)	121°C (10)
Minimum Temperature @ 23°C	4°C



High Speed fixed angle rotors to 13,400 Rcf (G)

55



Sealed lid included

Rotor	BRK5224	BRK5208	BRK5210
Rotor type	24 x 15ml	8 x 50ml	6 x 100ml
Tube size max	17 x 120mm	30 x 120mm	45 x 125mm
Minimum Rcf (G)	10	10	10
Maximum Rcf (G)	13,400	13,400	13,400
Maximum Speed	10,000	10,000	10,000
Radius max cms	12	12	12
Sample tube angle °	30	30	30
Acceleration time (secs)	30	30	30
Deceleration time (secs)	30	30	30
Autoclavable (frequency)	121°C (10)	121°C (10)	121°C (10)
Refrigerated Centrifuges Only			
Minimum Temperature	4°C	4°C	4°C
At maximum speed (relative to room temperature at 23°C)			

Reducers pack of 4

Rotor	BRK5224	BRK5208	BRK5210	
Part number	RM05 (5ml)	RM15 (15ml)	RL10 (10ml)	
Tube size max	13 x 80mm	17 x 120mm	16 x 100mm	
Part number	RM10 (10ml)	RM25 (25ml)	RL25 (25ml)	
Tube size max	16 x 100mm	25 x 100mm	25 x 100mm	
			RL50 (50ml)	
			35 x 110mm	
			RL85 (85ml)	
			39 x 110mm	

Large fixed angle rotors to 4,800 Rcf (G)



Sealed lid included

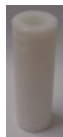
Rotor	BRK5324	BRK5308	BRK5100
Rotor type	24 x 15ml	8 x 50ml	6 x 100ml
Tube size max	17 x 120mm	30 x 120mm	45 x 125mm
Minimum Rcf (G)	10	10	10
Maximum Rcf (G)	4,800	4,800	4,800
Maximum Speed	6,000	6,000	6,000
Radius max cms	12	12	12
Sample tube angle °	30	30	30
Acceleration time (secs)	25	25	25
Deceleration time (secs)	25	25	25
Autoclavable (frequency)	121°C (10)	121°C (10)	121°C (10)
Refrigerated Centrifuges Only			
Minimum Temperature	4°C	4°C	4°C
At maximum speed (relative to room temperature at 23°C)			

Reducers pack of 4

Rotor	BRK5324
Part number	RM05 (5ml)
Tube size max	13 x 80mm
Part number	RM10 (10ml)
Tube size max	16 x 100mm



Rotor	BRK5308
Part number	RM15 (15ml)
Tube size max	17 x 120mm
Part number	RM25 (25ml)
Tube size max	25 x 100mm



Rotor	BRK5100
Part number	RL10 (10ml)
Tube size max	16 x 100mm
Part number	RL25 (25ml)
Tube size max	25 x 100mm
Part number	RL50 (50ml)
Tube size max	35 x 110mm
Part number	RL85 (85ml)
Tube size max	39 x 110mm



Micro rotors to 22,000 Rcf (G)

57



All Supplied with Sealed lid

Rotor	BRK5424	BRK5436	BRK5448	BRK5494
Rotor type	24 x 2.2ml	36 x 0.5ml	48 x 0.2 to 0.4ml	4 x Pcr Strips
Tube size max	11 x 50mm	8 x 30mm	6 x 40mm	6 x 40mm
Minimum Rcf (G)	10	10	10	10
Maximum Rcf (G)	22,000	22,000	22,000	22,000
Maximum Rpm	15,000	15,000	15,000	15,000
Radius max cms	8.75cms	8.75cms	8.75cms	8.75cms
Sample tube angle °	45	45	45	45
Acceleration time (secs)	15	15	15	15
Deceleration time (secs)	15	15	15	15
Autoclavable (frequency)	121°C (10)	121°C (10)	121°C (10)	121°C (10)
Minimum Temperature @ 23°C	4°C	4°C	4°C	4°C

Reducers pack of 4

Rotor	BRK5424
Part number	RS04 (0.2- 0.4ml)
Tube size max	6 x 30mm
Part number	RS05 (0.5ml)
Tube size max	8 x 30mm



Micro rotors High capacity to 24,000 Rcf (G)



Sealed lid included

Rotor	BRK5248	BRK5249	BRK5298
Rotor type	48 x 2.2ml	24x2.2 & 24x0.5ml	8 x Pcr Strips
Tube size max	11 x 50mm	11x50 & 6x30mm	6 x 40mm
Minimum Rcf (G)	10	10	10
Maximum Rcf (G)	24,000	24,000	24,000
Maximum Speed	15,000	15,000	15,000
Radius max cms	9.54cms	9.54cms	9.54cms
Sample tube angle °	45	45	45
Acceleration time (secs)	20	20	20
Deceleration time (secs)	20	20	20
Autoclavable (frequency)	121°C (10)	121°C (10)	121°C (10)
Minimum Temperature @ 23°C	4°C	4°C	4°C

Reducers pack of 4

Rotor	BRK5248.BRK5249
Part number	RS04 (0.2- 0.4ml)
Tube size max	6 x 30mm
Part number	RS05 (0.5ml)
Tube size max	8 x 30mm



Large Centrifuges to 2Litre max

Dual Centrifuges

Complete with Swing out rotor BRK3000, B2001 Buckets & adaptors

59



Ambient Centrifuge

Speed	4,000 Rpm max (1 Rpm steps)
Rcf Max	10 - 3,600 G
Timer	0 -9hours & Hold (1 sec steps)
Dims HWD	375 x 540 x 620mm
Weight	54.5 Kg (without rotor)
Power	750 Watts
Memory	99 programs
Accel rates	10 programs
Decel rates	10 programs

K504A Large Dual Centrifuge

K504A. (230V 50/60Hz) 1.K504A. (110V 60Hz)



Refrigerated Centrifuge

Speed	4,000 Rpm max (1 Rpm steps)
Rcf Max	10 - 3,600 G
Timer	0 -9hours & Hold (1 sec steps)
Dims HWD	410 x 845 x 660mm
Weight	87 Kg (without rotor)
Power	1200 Watts
Memory	99 programs
Accel rates	10 programs
Decel rates	10 programs
Temp range	-9C to 40C PID controlled to +/- 1C

KR504A Large Dual Centrifuge 3L

KR504A. (230V 50Hz) 1.KR504A. (110V 60Hz) 2.KR504A. (230V 60Hz)

60

Swing out Rotor 4 x 500ml Max. 3,600 Rcf (G)

BRK3000

2 Litre max capacity

B52001 Bucket (set 4) REQUIRED
500ml max per Bucket



Shown with optional B5319 sealed lids

Adaptors required see following page

Rotor/Buckets	BRK3000, B2001 Buckets
Tube size max	98 x 160mm
Minimum Rcf (G)	10
Maximum speed	4000Rpm
Maximum Rcf (G)	3600
Radius max cms	20.5
Sample tube angle °	0
Acceleration time (secs)	40
Deceleration time (secs)	40
Autoclavable (frequency)	121°C (20)
Minimum Temperature @ 23°C	4°C

Adaptors for Buckets. B2001 Pack of 4

Capacity **Size. mm** **Part Number** **Tubes per rotor**

Tube type: Micro with cap. Shape: Point

0.5ml	8 x 20	AM805-2	144
1.5ml	11 x 38	AM820-2	92
2.0ml	11 x 38	AM820-2	92
0.2ml	6 x 20	AM802-2	168
0.4ml	6 x 30	AM804-2	168

Tube type: Plain no cap. Shape: Round

1ml	6 x 45	AR801-2	168
3ml	10 x 60	AR803-2	96
5ml	12 x 75	AR805-2	96
6ml	12 x 82	AR805-2	96
7ml	12 x 100	AR807-2	96
9/10ml	14 x 100	AR809-2	84
15ml	17 x 100	AR815-2	48
25ml	24 x 100	AR825-2	28
50ml	34 x 100	AR850-2	16
100ml	45 x 100	AR8100-2	8
150ml	52 x 100	AR8150-2	4
250ml	62 x 100	AR8250-2	4

Tube type: Falcon with cap. Shape: Point

15ml	17 x 120	AF815-2	28
50ml	29 x 115	AF850-2	16
175ml	61 x 118	AF8175-2	4

Tube type: Falcon with cap. Shape: Square

12ml	17 x 100	AFS812-2	48
15ml	17 x 120	AFS815-2	28
25ml	25 x 90	AFS825-2	20
30ml	25 x 110	AFS830-2	16
50ml	29 x 115	AFS850-2	12

Tube type: Corning with cap. Shape: point

250ml	60 x 172	AF8250-2	4
500ml	98 x 148	AF8500-2	4

Tube type: Nalgene. Oakridge with cap. Shape: Round

10ml	15 x 80	ANO810-2	64
30ml	26 x 95	ANO830-2	20
50ml	29 x 107	ANO850-2	12
100ml	38 x 106	ANO885-2	12
250ml	62 x 133	ANO8250-2	4

Tube type: Nalgene. Oakridge with cap. Shape: Square

250ml	62 x 130	ANO8251-2	4
500ml	98 x 148	AH2695R	4 No lid

Tube type: Monovette. Shape Square

1.1-1.4ml	8 x 82	AM8014-2	96
2.7-3ml	11 x 82	AM803-2	76
2.6-2.9ml	13 x 81	AM829-2	68
4.5-5ml	11 x 108	AM803-2	76
7.5-8.2ml	13 x 106	AM879-2	68
4.5-5ml	15 x 92	AM850-2	64
9-10ml	16 X 108	AM890-2	64

Tube type: Vacutainer. Shape: Round also Vacuette

1.6-5ml	13 x 82	AV816-2	76
4-7ml	13 x 106	AV850-2	76
7-9ml	15 x 92	AV870-2	64
8.5-10ml	16 x 108	AV880-2	64



Large Centrifuges to 3L max

Prime multi rotor Centrifuge

Display indicative only



K243 Large Centrifuge 3L

K243. (230V 50/60Hz). 1.K243. (110V 60Hz)

Speed	15,000 Rpm max (1 Rpm steps)
Rcf Max	10 - 24,000 G
Timer	0-9hours & Hold (1 sec steps)
Dims HWD	375 x 570 x 660mm
Weight	59 Kg (without rotor)
Power	750 Watts
Memory	99 programs
Accel rates	10 programs
Decel rates	10 programs



K243 Large Centrifuge with Trolley

Trolley available

Part number	XMFS3
Total height	98 cm

Large Centrifuges to 3L max

Prime multi rotor Centrifuge

63

Display indicative only



K243R Large Centrifuge 3L Refrigerated

K243R.(230V 50Hz). 1.K243R.(110V60Hz). 2.K243R.(230V 60Hz)	
Speed	22,000 Rpm max(1 Rpm steps)
Rcf Max	10 - 24,000 G
Timer	0-9hours & Hold (1 sec steps)
Dims HWD	410 x 845 x 660mm
Weight	105Kg (without rotor)
Power	1200 Watts
Memory	99 programs
Accel rates	10 programs
Decel rates	10 programs
Temp range	-9C to 40C PID controlled to +/- 1C

Display indicative only

K243R Large Centrifuge with Trolley

Trolley available

Part number	XMRFS3
Total height	98 cm

Swing out Rotor 4 x 750ml Max. 4,000 Rcf (G)

BRK3000

3 Litre max capacity



B3001 Bucket (set 4) REQUIRED
750ml max per Bucket



Shown with optional B5319 sealed lids

Adaptors required see following page

Rotor/Buckets	BRK3000, B3001 Buckets
Tube size max	98 x 170mm
Minimum Rcf (G)	10
Maximum speed	4000Rpm
Maximum Rcf (G)	4000
Radius max cms	22.5
Sample tube angle °	0
Acceleration time (secs)	40
Deceleration time (secs)	40
Autoclavable (frequency)	121°C (20)
Minimum Temperature @ 23°C	4°C

Adaptors for Buckets. B3001 Pack of 4

Capacity **Size. mm** **Part Number** **Tubes per rotor**

Tube type: Micro with cap. Shape: Point

0.5ml	8 x 20	AM805-3	288
1.5ml	11 x 38	AM820-3	184
2.0ml	11 x 38	AM820-3	184
0.2ml	6 x 20	AM802-3	336
0.4ml	6 x 30	AM804-3	336

Tube type: Plain no cap. Shape: Round

1ml	6 x 45	AR801-3	168
3ml	10 x 60	AR803-3	96
5ml	12 x 75	AR805-3	96
6ml	12 x 82	AR805-3	96
7ml	12 x 100	AR807-3	96
9/10ml	14 x 100	AR809-3	84
15ml	17 x 100	AR815-3	48
25ml	24 x 100	AR825-3	28
50ml	34 x 100	AR850-3	16
100ml	45 x 100	AR8100-3	8
150ml	52 x 100	AR8150-3	4
250ml	62 x 100	AR8250-3	4

Tube type: Falcon with cap. Shape: Point

15ml	17 x 120	AF815-3	36
50ml	29 x 115	AF850-3	20
125ml	61 x 118	AF8175-3	4

Tube type: Falcon with cap. Shape: Square

12ml	17 x 100	AFS812-3	48
15ml	17 x 120	AFS815-3	36
25ml	25 x 90	AFS825-3	24
30ml	25 x 110	AFS830-3	24
50ml	29 x 115	AFS850-3	20

Tube type: Corning with cap. Shape: point

250ml	60 x 172	AF8250-3	4
500ml	98 x 148	AF8500-3	4

Tube type: Nalgene. Oakridge with cap. Shape: Round

10ml	15 x 80	ANO810-3	64
30ml	26 x 95	ANO830-3	24
50ml	29 x 107	ANO850-3	20
100ml	38 x 106	ANO885-3	12
250ml	62 x 133	ANO8250-3	4

Tube type: Nalgene. Oakridge with cap. Shape: Square

250ml	60 x 172	ANO8252-3	4
500ml	98 x 148	ANO8500-3	4
750ml	60 x 160	ANO8750-3	4 No lid

Tube type: Monovette. Shape Square

1.1-1.4ml	8 x 82	AM8014-3	112
2.7-3ml	11 x 82	AM803-3	76
2.6-2.9ml	13 x 81	AM829-3	76
4.5-5ml	11 x 108	AM803-3	76
7.5-8.2ml	13 x 106	AM879-3	76
4.5-5ml	15 x 92	AM850-3	64
9-10ml	16 X 108	AM890-3	64

Tube type: Vacutainer. Shape: Round also Vacuette

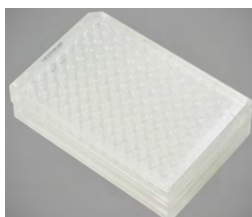
1.6-5ml	13 x 82	AV816-3	76
4-7ml	13 x 106	AV850-3	76
7-9ml	15 x 92	AV870-3	64
8.5-10ml	16 x 108	AV880-3	64



Microtiter Plate Rotor 4 x Standard or 2 x High Plates



Rotor	BRK5540
	Complete with buckets
Rotor type Tube size max	Available with 4 x STD Plates 85mm x 128mm
Minimum Rcf (G)	10
Maximum Rcf (G)	2500
Maximum Rpm	3500
Radius max cms	14
Sample tube angle °	0°C (10)
Acceleration time (secs)	20
Deceleration time (secs)	20
Autoclavable (frequency)	121°C (10)
Minimum Temperature @ 23°C	4°C



High Speed fixed angle rotors to 13,400 Rcf (G)

67



Sealed lid included

Rotor	BRK5224	BRK5208	BRK5210
Rotor type	24 x 15ml	8 x 50ml	6 x 100ml
Tube size max	17 x 120mm	30 x 120mm	45 x 125mm
Minimum Rcf (G)	10	10	10
Maximum Rcf (G)	13,400	13,400	13,400
Maximum Speed	10,000	10,000	10,000
Radius max cms	12	12	12
Sample tube angle °	30	30	30
Acceleration time (secs)	30	30	30
Deceleration time (secs)	30	30	30
Autoclavable (frequency)	121°C (10)	121°C (10)	121°C (10)
Refrigerated Centrifuges Only			
Minimum Temperature	4°C	4°C	4°C
At maximum speed (relative to room temperature at 23°C)			

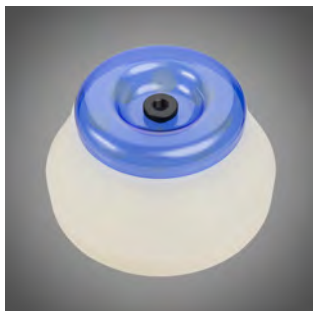
Reducers pack of 4

Rotor	BRK5224	BRK5208	BRK5210
Part number	RM05 (5ml)	RM15 (15ml)	RL10 (10ml)
Tube size max	13 x 80mm	17 x 120mm	16 x 100mm
Part number	RM10 (10ml)	RM25 (25ml)	RL25 (25ml)
Tube size max	16 x 100mm	25 x 100mm	25 x 100mm
			RL50 (50ml)
			35 x 110mm
			RL85 (85ml)
			39 x 110mm



Large fixed angle rotors to 4,800 Rcf (G)

69



Sealed lid included

Rotor	BRK5324	BRK5308	BRK5100
Rotor type	24 x 15ml	8 x 50ml	6 x 100ml
Tube size max	17 x 120mm	30 x 120mm	45 x 125mm
Minimum Rcf (G)	10	10	10
Maximum Rcf (G)	4,800	4,800	4,800
Maximum Speed	6,000	6,000	6,000
Radius max cms	12	12	12
Sample tube angle °	30	30	30
Acceleration time (secs)	25	25	25
Deceleration time (secs)	25	25	25
Autoclavable (frequency)	121°C (10)	121°C (10)	121°C (10)

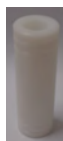
Refrigerated Centrifuges Only

Minimum Temperature	4°C	4°C	4°C
---------------------	-----	-----	-----

At maximum speed (relative to room temperature at 23°C)

Reducers pack of 4

Rotor	BRK5324	BRK5308	BRK5100
Part number	RM05 (5ml)	RM15 (15ml)	RL10 (10ml)
Tube size max	13 x 80mm	17 x 120mm	16 x 100mm
Part number	RM10 (10ml)	RM25 (25ml)	RL25 (25ml)
Tube size max	16 x 100mm	25 x 100mm	25 x 100mm
			RL50 (50ml)
			35 x 110mm
			RL85 (85ml)
			39 x 110mm



Micro rotors to 22,000 Rcf (G)



Sealed lid included

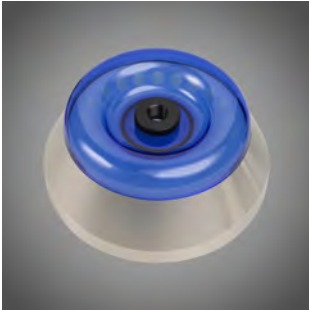
Rotor	BRK5424	BRK5436	BRK5448	BRK5494
Rotor type	24 x 2.2ml	36 x 0.5ml	48 x 0.2 to 0.4ml	4 x Pcr Strips
Tube size max	11 x 50mm	8 x 30mm	6 x 40mm	6 x 40mm
Minimum Rcf (G)	10	10	10	10
Maximum Rcf (G)	22,000	22,000	22,000	22,000
Maximum Rpm	15,000	15,000	15,000	15,000
Radius max cms	8.75cms	8.75cms	8.75cms	8.75cms
Sample tube angle °	45	45	45	45
Acceleration time (secs)	15	15	15	15
Deceleration time (secs)	15	15	15	15
Autoclavable (frequency)	121°C (10)	121°C (10)	121°C (10)	121°C (10)
Minimum Temperature @ 23°C	4°C	4°C	4°C	4°C

Reducers pack of 4

Rotor	BRK5424
Part number	RS04 (0.2- 0.4ml)
Tube size max	6 x 30mm
Part number	RS05 (0.5ml)
Tube size max	8 x 30mm



Micro rotors High capacity to 24,000 Rcf (G)



Sealed lid included

Rotor	BRK5248	BRK5249	BRK5298
Rotor type	48 x 2.2ml	24x2.2 & 24x0.5ml	8 x Pcr Strips
Tube size max	11 x 50mm	11x50 & 6x30mm	6 x 40mm
Minimum Rcf (G)	10	10	10
Maximum Rcf (G)	24,000	24,000	24,000
Maximum Speed	15,000	15,000	15,000
Radius max cms	9.54cms	9.54cms	9.54cms
Sample tube angle °	45	45	45
Acceleration time (secs)	25	25	25
Deceleration time (secs)	25	25	25
Autoclavable (frequency)	121°C (10)	121°C (10)	121°C (10)
Minimum Temperature @ 23°C	4°C	4°C	4°C

Reducers pack of 4

Rotor	BRK5248.BRK5249
Part number	RS04 (0.2- 0.4ml)
Tube size max	6 x 30mm
Part number	RS05 (0.5ml)
Tube size max	8 x 30mm



Refrigerated Centrifuges

Dynamics rooted in innovation

Accuracy and control using less power.

How?

Centurion Scientific Ltd keep the compressor running constantly, sounds odd but this method increases compressor life and reduces power dramatically. Constantly turning a compressor on and off means a huge surge of power on each action, plus poor temperature control, see graph below To control the accuracy to an unprecedented level we balance and control with a heater. This is controlled by a PID system offering top level control

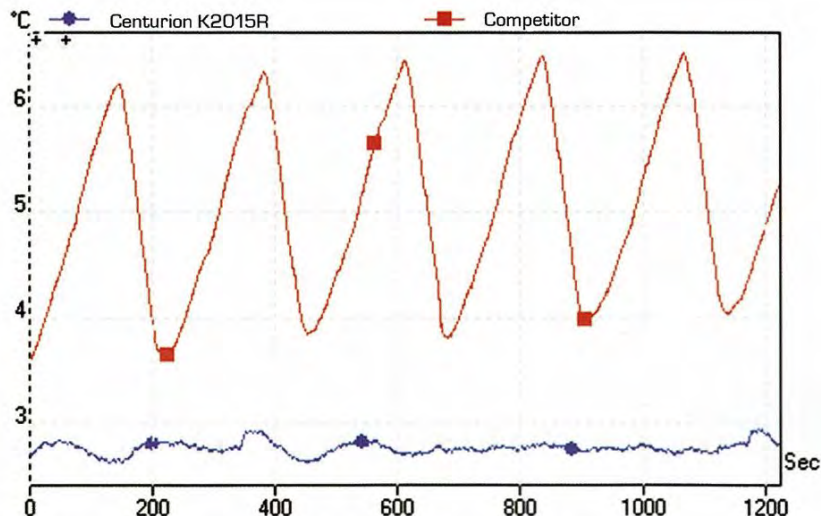
Why?

Imagine using a shower, you turn on both Hot water and cold to reach your desired temperature. You would not stand in cold water, then hot to regulate temperature. By using both Cold and Hot we “balance” the set temperature As we have been using this method for over 25 years it is a proven technology.

Proof

See the Graph below.

Centurion is set at 3C and a well known Competitor at 4C to differentiate. As you can clearly see our system has control and repeatability beyond our competition.

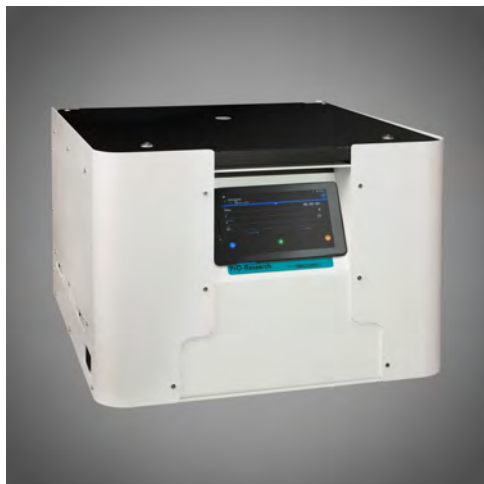


Large Centrifuges to 3Litre max

Dual Centrifuges

Complete with Swing out rotor BRK3000, B3001 Buckets & adaptors

73



Ambient Centrifuge

Speed	4,000 Rpm max(1 Rpm steps)
Rcf Max	10 - 4,000 G
Timer	0-9hours & Hold (1 sec steps)
Dims HWD	375 x 570 x 660mm
Weight	59 Kg (without rotor)
Power	750 Watts
Memory	99 programs
Accel rates	10 programs
Decel rates	10 programs

K704A Large Dual Centrifuge 3L

K704A. (230V 50/60Hz). 1.K704A. (110V 60Hz)



Refrigerated Centrifuge

Speed	4,000 Rpm max(1 Rpm steps)
Rcf Max	10 - 4,000 G
Timer	0-9hours & Hold (1 sec steps)
Dims HWD	410 x 845 x 660mm
Weight	105 Kg (without rotor)
Power	1200 Watts
Memory	99 programs
Accel rates	10 programs
Decel rates	10 programs
Temp range	-9C to 40C PID controlled to +/- 1C

KR704A Large Dual Centrifuge 3L

KR704A. (230V 50Hz). 1.KR704A. (110V 60Hz). 2.KR704A. (230V 60Hz)

Swing out Rotor 4 x 750ml Max. 4,000 Rcf (G)

BRK3000

3 Litre max capacity



B3001 Bucket (set 4) REQUIRED.
750ml max per Bucket



Shown with optional B5319 sealed lids

Adaptors required see following page

Rotor/Buckets	BRK3000. B3001 Buckets
Tube size max	98 x 170mm
Minimum Rcf (G)	10
Maximum Rcf (G)	4000
Maximum Speed	4000Rpm
Radius max cms	22.5
Sample tube angle °	0
Acceleration time (secs)	40
Deceleration time (secs)	40
Autoclavable (frequency)	121°C (20)
Minimum Temperature @ 23°C	4°C

Adaptors for Buckets. B3001 Pack of 4

Capacity **Size. mm** **Part Number** **Tubes per rotor**

Tube type: Micro with cap. Shape: Point

0.5ml	8 x 20	AM805-3	288
1.5ml	11 x 38	AM820-3	184
2.0ml	11 x 38	AM820-3	184
0.2ml	6 x 20	AM802-3	336
0.4ml	6 x 30	AM804-3	336

Tube type: Plain no cap. Shape: Round

1ml	6 x 45	AR801-3	168
3ml	10 x 60	AR803-3	96
5ml	12 x 75	AR805-3	96
6ml	12 x 82	AR805-3	96
7ml	12 x 100	AR807-3	96
9/10ml	14 x 100	AR809-3	84
15ml	17 x 100	AR815-3	48
25ml	24 x 100	AR825-3	28
50ml	34 x 100	AR850-3	16
100ml	45 x 100	AR8100-3	8
150ml	52 x 100	AR8150-3	4
250ml	62 x 100	AR8250-3	4

Tube type: Falcon with cap. Shape: Point

15ml	17 x 120	AF815-3	36
50ml	29 x 115	AF850-3	20
125ml	61 x 118	AF8175-3	4

Tube type: Falcon with cap. Shape: Square

12ml	17 x 100	AFS812-3	48
15ml	17 x 120	AFS815-3	36
25ml	25 x 90	AFS825-3	24
30ml	25 x 110	AFS830-3	24
50ml	29 x 115	AFS850-3	20

Tube type: Corning with cap. Shape: point

250ml	60 x 172	AF8250-3	4
500ml	98 x 148	AF8500-3	4

Tube type: Nalgene. Oakridge with cap. Shape: Round

10ml	15 x 80	ANO810-3	64
30ml	26 x 95	ANO830-3	24
50ml	29 x 107	ANO850-3	20
100ml	38 x 106	ANO885-3	12
250ml	62 x 133	ANO8250-3	4

Tube type: Nalgene. Oakridge with cap. Shape: Square

250ml	60 x 172	ANO8252-3	4
500ml	98 x 148	ANO8500-3	4
750ml	60 x 160	ANO8750-3	4 No lid

Tube type: Monovette. Shape Square

1.1-1.4ml	8 x 82	AM8014-3	112
2.7-3ml	11 x 82	AM803-3	76
2.6-2.9ml	13 x 81	AM829-3	76
4.5-5ml	11 x 108	AM803-3	76
7.5-8.2ml	13 x 106	AM879-3	76
4.5-5ml	15 x 92	AM850-3	64
9-10ml	16 X 108	AM890-3	64

Tube type: Vacutainer. Shape: Round also Vacuette

1.6-5ml	13 x 82	AV816-3	76
4-7ml	13 x 106	AV850-3	76
7-9ml	15 x 92	AV870-3	64
8.5-10ml	16 x 108	AV880-3	64



Floor Centrifuges to 4Litre max

Prime multi rotor Centrifuges

K2FS4/R Floor Standing Centrifuge (4L Max)



Display indicative only

K2FS4 Ambient

K2FS4.(230V 50/60Hz). 1.K2FS4.(110V 60Hz)

Speed	15,000 Rpm max(1 Rpm steps)
Rcf Max	10 - 24,000 G
Timer	0-9hours & Hold (1 sec steps)
Dims HWD	1000 x 575 x 660mm
Weight	80 Kg (without rotor)
Power	1200 Watts
Memory	99 programs
Accel rates	10 programs
Decel rates	10 programs

K2FS4R Refrigerated

K2FS4R.(230V 50Hz). 1.K2FS4R.(110V 60Hz).
2.K2FS4R.(230V 60Hz)

Speed	15,000 Rpm max(1 Rpm steps)
Rcf Max	10 - 24,000 G
Timer	0-9hours & Hold (1 sec steps)
Dims HWD	1000 x 575 x 660mm
Weight	115 Kg (without rotor)
Power	1200 Watts
Memory	99 programs
Accel rates	10 programs
Decel rates	10 programs
Temp	-9°C to + 40°C PID Controlled to + / - 1°C

The following pages show available rotors.

Rotor Details

Rotors 16,100 Rcf (G)



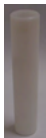
Rotor	BRK5256
Rotor type	6 x 250ml
Tube size max	62 x 130mm
Minimum Rcf (G)	10
Maximum Rcf (G)	16,100
Maximum Speed	10,000
Radius max cms	14.4
Sample tube angle °	30
Acceleration time (secs)	60
Deceleration time (secs)	85
Autoclavable (frequency)	121°C (10)

Refrigerated Centrifuges Only

Minimum Temperature	4°C
At maximum speed (relative to room temperature at 23°C)	

Reducers pack of 4

Rotor	BRK5256			
Part number	RX10 (10ml)	RX25 (25ml)	RX50 (50ml)	
Tube size max	16 x 100mm	25 x 100mm	35 x 110mm	
Part number	RX85 (85ml)	RX100 (100ml)	RX175 (175ml)	
Tube size max	39 x 110mm	48 x 110mm	62 x 121mm	



Swing out Rotor 4 x 1000ml Max. 4,500 Rcf (G)

BRK3000

4 Litre max capacity



B4001 Bucket (set 4) REQUIRED.
1000ml max per Bucket



Shown with optional B5319 sealed lids

Adaptors required see following page

Rotor/Buckets	BRK3000. B4001 Buckets
Tube size max	98 x 180mm
Minimum Rcf (G)	10
Maximum Speed	4000Rpm
Maximum Rcf (G)	4500
Radius max cms	25.5
Sample tube angle °	0
Acceleration time (secs)	40
Deceleration time (secs)	40
Autoclavable (frequency)	121°C (20)
Minimum Temperature @ 23°C	4°C

Adaptors for Buckets. B4001 Pack of 4

Capacity **Size. mm** **Part Number** **Tubes per rotor**

Tube type: Micro with cap. Shape: Point

0.5ml	8 x 20	AM805-4	288
1.5ml	11 x 38	AM820-4	184
2.0ml	11 x 38	AM820-4	184
0.2ml	6 x 20	AM802-4	336
0.4ml	6 x 30	AM805-4	336

Tube type: Plain no cap. Shape: Round

1ml	6 x 45	AR801-4	168
3ml	10 x 60	AR803-4	96
5ml	12 x 75	AR805-4	96
6ml	12 x 82	AR805-4	96
7ml	12 x 100	AR807-4	96
9/10ml	14 x 100	AR809-4	84
15ml	17 x 100	AR815-4	48
25ml	24 x 100	AR825-4	28
50ml	34 x 100	AR850-4	16
100ml	45 x 100	AR8100-4	8
125ml	52 x 100	AR8150-4	4
250ml	62 x 100	AR8250-4	4

Tube type: Falcon with cap. Shape: Point

15ml	17 x 120	AF815-4	36
50ml	29 x 115	AF850-4	24
175ml	61 x 118	AF8175-4	4

Tube type: Falcon with cap. Shape: Square

12ml	17 x 100	AFS812-4	48
15ml	17 x 120	AFS815-4	36
25ml	25 x 90	AFS825-4	28
30ml	25 x 110	AFS830-4	28
50ml	29 x 115	AFS850-4	24

Tube type: Corning with cap. Shape: point

250ml	60 x 172	AF8250-4	4
500ml	98 x 148	AF8500-4	4

Tube type: Nalgene. Oakridge with cap. Shape: Round

10ml	15 x 80	ANO810-4	64
30ml	26 x 95	ANO830-4	28
50ml	29 x 107	ANO850-4	24
100ml	38 x 106	ANO885-4	12
250ml	62 x 133	ANO8250-4	4

Tube type: Nalgene. Oakridge with cap. Shape: Square

250ml	60 x 172	ANO8250-4	4
500ml	98 x 148	ANO8500-4	4
750ml	60 x 160	ANO8750-4	4
1000ml	98 x 170	AS98148S	4

Tube type: Monovette. Shape Square

1.1-1.4ml	8 x 82	AM801-4	112
2.7-3ml	11 x 82	AM803-4	76
2.6-2.9ml	13 x 81	AM829-4	76
4.5-5ml	11 x 108	AM803-4	76
7.5-8.2ml	13 x 106	AM879-4	76
4.5-5ml	15 x 92	AM850-4	64
9-10ml	16 X 108	AM890-4	64

Tube type: Vacutainer. Shape: Round also Vacuette

1.6-5ml	13 x 82	AV816-4	76
4-7ml	13 x 106	AV850-4	76
7-9ml	15 x 92	AV870-4	64
8.5-10ml	16 x 108	AV880-4	64



High Speed fixed angle rotors to 13,400 Rcf (G)



Sealed lid included

Rotor	BRK5224	BRK5208	BRK5210
Rotor type	24 x 15ml	8 x 50ml	6 x 100ml
Tube size max	17 x 120mm	30 x 120mm	45 x 125mm
Minimum Rcf (G)	10	10	10
Maximum Rcf (G)	13,400	13,400	13,400
Maximum Speed	10,000	10,000	10,000
Radius max cms	12	12	12
Sample tube angle °	30	30	30
Acceleration time (secs)	30	30	30
Deceleration time (secs)	30	30	30
Autoclavable (frequency)	121°C (10)	121°C (10)	121°C (10)

Refrigerated Centrifuges Only

Minimum Temperature	4°C	4°C	4°C
At maximum speed (relative to room temperature at 23°C)			

Reducers pack of 4

Rotor	BRK5224	BRK5208	BRK5210
Part number	RM05 (5ml)	RM15 (15ml)	RL10 (10ml)
Tube size max	13 x 80mm	17 x 120mm	16 x 100mm
Part number	RM10 (10ml)	RM25 (25ml)	RL25 (25ml)
Tube size max	16 x 100mm	25 x 100mm	25 x 100mm
			RL50 (50ml)
			35 x 110mm
			RL85 (85ml)
			39 x 110mm



Large fixed angle rotors to 4,800 Rcf (G)



Sealed lid included

Rotor	BRK5324	BRK5308	BRK5100
Rotor type	24 x 15ml	8 x 50ml	6 x 100ml
Tube size max	17 x 120mm	30 x 120mm	45 x 125mm
Minimum Rcf (G)	10	10	10
Maximum Rcf (G)	4,800	4,800	4,800
Maximum Speed	6,000	6,000	6,000
Radius max cms	12	12	12
Sample tube angle °	30	30	30
Acceleration time (secs)	25	25	25
Deceleration time (secs)	25	25	25
Autoclavable (frequency)	121°C (10)	121°C (10)	121°C (10)

Refrigerated Centrifuges Only

Minimum Temperature	4°C	4°C	4°C
At maximum speed (relative to room temperature at 23°C)			

Reducers pack of 4

Rotor	BRK5324	BRK5308	BRK5100
Part number	RM05 (5ml)	RM15 (15ml)	RL10 (10ml)
Tube size max	13 x 80mm	17 x 120mm	16 x 100mm
Part number	RM10 (10ml)	RM25 (25ml)	RL25 (25ml)
Tube size max	16 x 100mm	25 x 100mm	25 x 100mm
			RL50 (50ml)
			35 x 110mm
			RL85 (85ml)
			39 x 110mm



Micro rotors to 22,000 Rcf (G)



Sealed lid included

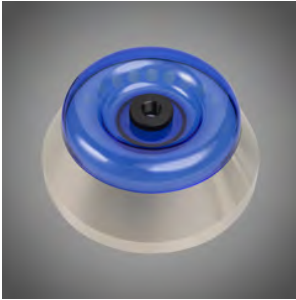
Rotor	BRK5424	BRK5436	BRK5448	BRK5494
Rotor type	24 x 2.2ml	36 x 0.5ml	48 x 0.2 to 0.4ml	4 x Pcr Strips
Tube size max	11 x 50mm	8 x 30mm	6 x 40mm	6 x 40mm
Minimum Rcf (G)	10	10	10	10
Maximum Rcf (G)	22,000	22,000	22,000	22,000
Maximum Rpm	15,000	15,000	15,000	15,000
Radius max cms	8.75cms	8.75cms	8.75cms	8.75cms
Sample tube angle °	45	45	45	45
Acceleration time (secs)	15	15	15	15
Deceleration time (secs)	15	15	15	15
Autoclavable (frequency)	121°C (10)	121°C (10)	121°C (10)	121°C (10)
Minimum Temperature @ 23°C	4°C	4°C	4°C	4°C

Reducers pack of 4

Rotor	BRK5424
Part number	RS04 (0.2- 0.4ml)
Tube size max	6 x 30mm
Part number	RS05 (0.5ml)
Tube size max	8 x 30mm



Micro rotors High capacity to 24,000 Rcf (G)



Sealed lid included

Rotor	BRK5248	BRK5249	BRK5298
Rotor type	48 x 2.2ml	24x2.2 & 24x0.5ml	8 x Pcr Strips
Tube size max	11 x 50mm	11x50 & 6x30mm	6 x 40mm
Minimum Rcf (G)	10	10	10
Maximum Rcf (G)	24,000	24,000	24,000
Maximum Speed	15,000	15,000	15,000
Radius max cms	9.54cms	9.54cms	9.54cms
Sample tube angle °	45	45	45
Acceleration time (secs)	25	25	25
Deceleration time (secs)	25	25	25
Autoclavable (frequency)	121°C (10)	121°C (10)	121°C (10)
Minimum Temperature @ 23°C	4°C	4°C	4°C

Reducers pack of 4

Rotor	BRK5248.BRK5249
Part number	RS04 (0.2- 0.4ml)
Tube size max	6 x 30mm
Part number	RS05 (0.5ml)
Tube size max	8 x 30mm



Refrigerated Centrifuges

Dynamics rooted in innovation

Accuracy and control using less power.

How?

Centurion Scientific Ltd keep the compressor running constantly, Sounds odd, but this method increases compressor life and reduces power dramatically. Constantly turning a compressor on and off means a huge surge of power on each action, plus poor temperature control. See graph below to control the accuracy to an unprecedented level we balance and control with a heater. This is controlled by a PID system offering top level control.

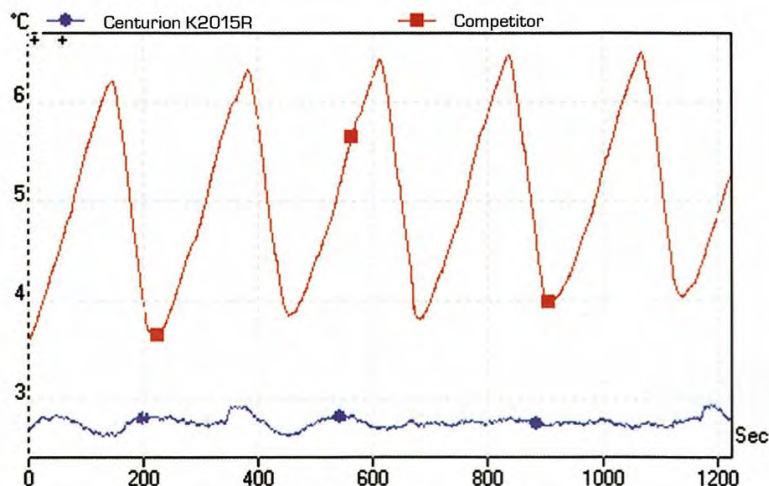
Why?

Imagine using a shower, you turn on both Hot water and cold to reach your desired temperature. You would not stand in cold water, then hot to regulate temperature. By using both cold and hot we “balance” the set temperature As we have been using this method for over 27 years it is a proven technology.

Proof

See the graph below.

Centurion is set at 3C and a well known competitor at 4C to differentiate. As you can clearly see our system has control and repeatability beyond our competition



Floor Centrifuge to 4Litre max

Dual rotor Centrifuges

Complete with rotor BRK3000, B4000 buckets & adaptors

85

KFS4A/R Floor Standing Centrifuge (4L Max)



Display indicative only

KFS4A Ambient

KFS4A.(230V 50/60Hz). 1.KFS4A.(110V 60Hz)

Speed	4,000 Rpm max(1 Rpm steps)
Rcf Max	10 - 4,500 G
Timer	0-9hours & Hold (1 sec steps)
Dims HWD	1000 x 575 x 660mm
Weight	80 Kg (without rotor)
Power	750 Watts
Memory	99 programs
Accel rates	10 programs
Decel rates	10 programs

KRFS4A Refrigerated

KRFS4A.(230V 50Hz). 1.KRFS4A.(110V 60Hz).
2.KRFS4A.(230V 60Hz)

Speed	4,000 Rpm (1 Rpm steps)
Rcf Max	10 - 4,500 G
Timer	0-9hours & Hold (1 sec steps)
Dims HWD	1000 x 575 x 660mm
Weight	125 Kg (without rotor)
Power	1200 Watts
Memory	99 programs
Accel rates	10 programs
Decel rates	10 programs
Temp	-9°C to + 40°C PID Controlled to + / - 1°C

The following pages show available rotors.

Swing out Rotor 4 x 1000ml Max. 4,500 Rcf (G)

86

BRK3000

4 Litre max capacity



B4001 Bucket (set 4) REQUIRED.
1000ml max per Bucket



Shown with optional B5319 sealed lids

Adaptors required see following page

Rotor/Buckets	BRK3000. B4001 Buckets
Tube size max	98 x 180mm
Minimum Rcf (G)	10
Maximum Speed	4000Rpm
Maximum Rcf (G)	4500
Radius max cms	25.5
Sample tube angle °	0
Acceleration time (secs)	40
Deceleration time (secs)	40
Autoclavable (frequency)	121°C (20)
Minimum Temperature @ 23°C	4°C

Adaptors for Buckets. B4001 Pack of 4

Capacity	Size. mm	Part Number	Tubes per rotor
----------	----------	-------------	-----------------

Tube type: Micro with cap. Shape: Point

0.5ml	8 x 20	AM805-4	288
1.5ml	11 x 38	AM820-4	184
2.0ml	11 x 38	AM820-4	184
0.2ml	6 x 20	AM802-4	336
0.4ml	6 x 30	AM805-4	336

Tube type: Plain no cap. Shape: Round

1ml	6 x 45	AR801-4	168
3ml	10 x 60	AR803-4	96
5ml	12 x 75	AR805-4	96
6ml	12 x 82	AR805-4	96
7ml	12 x 100	AR807-4	96
9/10ml	14 x 100	AR809-4	84
15ml	17 x 100	AR815-4	48
25ml	24 x 100	AR825-4	28
50ml	34 x 100	AR850-4	16
100ml	45 x 100	AR8100-4	8
125ml	52 x 100	AR8150-4	4
250ml	62 x 100	AR8250-4	4

Tube type: Falcon with cap. Shape: Point

15ml	17 x 120	AF815-4	36
50ml	29 x 115	AF850-4	24
175ml	61 x 118	AF8175-4	4

Tube type: Falcon with cap. Shape: Square

12ml	17 x 100	AFS812-4	48
15ml	17 x 120	AFS815-4	36
25ml	25 x 90	AFS825-4	28
30ml	25 x 110	AFS830-4	28
50ml	29 x 115	AFS850-4	24

Tube type: Corning with cap. Shape: point

250ml	60 x 172	AF8250-4	4
500ml	98 x 148	AF8500-4	4

Tube type: Nalgene. Oakridge with cap. Shape: Round

10ml	15 x 80	ANO810-4	64
30ml	26 x 95	ANO830-4	28
50ml	29 x 107	ANO850-4	24
100ml	38 x 106	ANO885-4	12
250ml	62 x 133	ANO8250-4	4

Tube type: Nalgene. Oakridge with cap. Shape: Square

250ml	60 x 172	ANO8250-4	4
500ml	98 x 148	ANO8500-4	4
750ml	60 x 160	ANO8750-4	4
1000ml	98 x 170	AS98148S	4

Tube type: Monovette. Shape Square

1.1-1.4ml	8 x 82	AM801-4	112
2.7-3ml	11 x 82	AM803-4	76
2.6-2.9ml	13 x 81	AM829-4	76
4.5-5ml	11 x 108	AM803-4	76
7.5-8.2ml	13 x 106	AM879-4	76
4.5-5ml	15 x 92	AM850-4	64
9-10ml	16 X 108	AM890-4	64

Tube type: Vacutainer. Shape: Round also Vacuette

1.6-5ml	13 x 82	AV816-4	76
4-7ml	13 x 106	AV850-4	76
7-9ml	15 x 92	AV870-4	64
8.5-10ml	16 x 108	AV880-4	64



Call us on: Tel +44(0)2392 631225
or email

General: info@centurionscientific.co.uk

Sales: sales@centurionscientific.co.uk

Head Office

The Old Stables
Church Farm
Stoughton
Chichester
West Sussex
PO18 9JL
United Kingdom.

www.Pro-researchcentrifuge.com

Research & service

The Old equine Barn
Church Farm
Stoughton
Chichester
PO18 9JL. UK

Ambient manufacturing

The Old Grain Barn
Church Farm
Stoughton
Chichester
PO18 9JL. UK

Refrigeration Manufacturing

The Old Drier Barn
Church Farm
Stoughton
Chichester
PO18 9JL. UK

Logistics

The Old Storage Barn
Church Farm
Stoughton
Chichester
PO18 9JL. UK

Distributed by

Follow Centurion Scientific

