

# PrO-VET

a division of

**CENTURION**  
SCIENTIFIC LIMITED



**PCV, Serum, Faeces,  
Sperm & Cytology**

# Welcome

## to our PrO-VET Centrifuge range

Simple and safe to use.

Our centrifuges offer ease of use.

LID Models offer 4 pre written programs

- All the 4 programs have been pre-set for ease of use
  - Press Function and select 1 of 4 parameters
  - Load your samples, shut the lid and press Start
  - Easy and reliable
- LED models are also available for more complex requirements allowing full user programming
  - Multiple features
  - Long Lifetime for confidence of purchase
  - Run finish buzzer. (Can be turned off)
  - Full safety features for safe and confident use
  - Space saving and quiet
  - Equine & Bovine models require a rotor (not inclusive) A numerous choice is available
  - Models available From our Micro Haematocrit to Large animal types See the index on the opposite page

Centurion Scientific Ltd Centrifuges comply to all relevant EU standards of quality and medical devices IEC61010 and CE conformity test marks emission, immunity to EN/IEC 61326-1, Class B

# Contents

## Small animals

PrO-Vet HE	Haematocrit centrifuge	24 x Capillary & 12 x 2ml	4
PrO-Vet SO	Swing out centrifuge	8 x 5ml	5
PrO-Vet PCV.h	Dual. Haematocrit & swing out centrifuge	24 x Capillary 12 x 2ml Swing out 8 x 5ml	6-7

## Medium size animals

PrO-Vet Serum.FA4	Fixed angle rotor centrifuge	4 x 50ml	8
PrO-Vet Serum.FA8	Fixed angle rotor centrifuge	4 x 10ml & 4 x 15ml	9
PrO-Vet Serum.s	Dual. Fixed angle rotor centrifuge	4 x 10ml & 4 x 15ml 4 x 50ml	10-11
PrO-Vet PCV.s	Dual. Haematocrit & Fixed angle centrifuge	24 x Capillary & 12 x 2ml 8 x 15ml	12-13

## Medium to Large Bovine

PrO-Vet.Multi		24 x Capillary 12 x 2ml Swing out 4 x 100ml	14-17
---------------	--	--	-------

## Large Equine

PrO-Vet.Equine.SO	Swing out rotor centrifuge	8 x 10ml	18
PrO-Vet.CYTO	Cytology centrifuge	4 x dual holders	19
PrO-Vet.Equine	Multiple roto centrifuge	Range of rotors	20-27
PrO-Vet.Bovine			

Type of analysis	Page
------------------	------

Haematocrit / 2ml Serum	4, 6, 12, 14, 20
Serum. Horizontal. Swing out rotor	5, 6, 14, 18, 20
Serum. Angular. Fixed angle	8, 9, 10, 12, 20
Urine All rotors (not cytology)	

Type of analysis	Page
------------------	------

Sperm	8, 10, 14, 18, 20
Faeces	10, 14, 20
Cytology/Histology	19, 20

# Micro Centrifuge

## Supplied with Haematocrit rotor



### HE Ambient Centrifuge

Programs	Speed	Time
1. PCV	13,000Rpm	300 secs
2. Serum 1	6,000Rpm	600 secs
3. Serum 2	5,000Rpm	300 secs
4. Urine	2,500Rpm	300 secs
<b>HWD</b>	280x240x360mm	
<b>Weight</b>	12.8 Kg	
<b>Power</b>	125 Watts	

Display indicative only

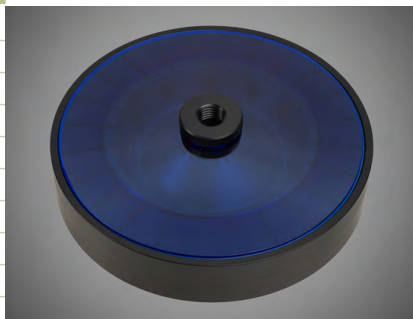
#### PART NUMBERS. (230V 50/60HZ)

PrO-VET.HE. With BRK5401 rotor

#### PART NUMBERS. (110V 60HZ)

1.PrO-VET.HE. With BRK5401 rotor

Rotor	BRK5401
Rotor type	24 x capillary & 12x2ml
Tube size max	2 x 75mm & 11 x 40mm
Minimum Rcf (G)	10
Maximum speed Rpm	13,000
Maximum Rcf (G)	15,800
Radius max cms Sample	8.4
Tube angle °	0 & 60
Acceleration time (secs)	25
Deceleration time (secs)	25
Autoclavable (frequency)	121°C (10)



# Micro Centrifuge

## Supplied with Swing out rotor



Display indicative only

### SO Ambient Centrifuge

Programs	Speed	Time
1. Serum fast	4,000Rpm	300 secs
2. Serum 1	3,500Rpm	360 secs
3. Serum 2	3,000Rpm	420 secs
4. Urine	2,500Rpm	300 secs
<b>HWD</b>	280x240x360mm	
<b>Weight</b>	12.8 Kg	
<b>Power</b>	125 Watts	

#### PART NUMBER. (230V50/60HZ)

PrO-VET.SO. With BRK5508S rotor

#### PART NUMBER.(110V 60HZ)

1.PrO-VET.SO. With BRK5508S rotor



Rotor	BRK5508S
Rotor type	4 x 5ml Swing out
Tube size max	13 x 82mm
Minimum Rcf (G)	10
Maximum speed Rpm	4,000
Maximum Rcf (G)	1500
Radius max cms Sample	8.5
Tube angle °	0
Acceleration time (secs)	20
Deceleration time (secs)	20
Autoclavable (frequency)	121°C (10)

# Micro Centrifuge

## Supplied with Haematocrit rotor and Swing out rotor



### PCV.h Ambient Centrifuge

Program 1	Speed	Time
1. PCV	13,000Rpm	300 secs
2. Serum 1	6,000Rpm	600 secs
3. Serum 2	5,000Rpm	300 secs
4. Urine	2,500Rpm	300 secs
<b>HWD</b>	280x240x360mm	
<b>Weight</b>	12.8 Kg	
<b>Power</b>	125 Watts	

Display indicative only

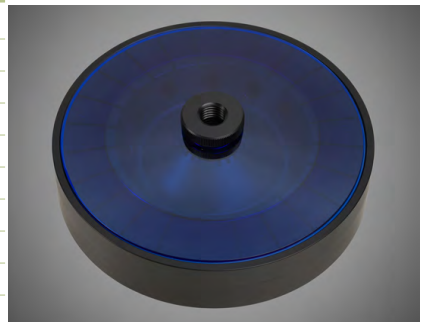
#### PART NUMBERS. (230V 50/60HZ)

PrO-VET.PCVh. With BRK5401 rotor and with BRK5508S rotor

#### PART NUMBERS. (110V 60HZ)

1.PrO-VET.PCVh. With BRK5401 rotor and with BRK5508S rotor

Rotor	BRK5401
Rotor type	24 x capillary & 12 x 2ml
Tube size max	2 x 75mm & 11 x 40mm
Minimum Rcf (G)	10
Maximum speed Rpm	13,000
Maximum Rcf (G)	15,800
Radius max cms Sample	8.4
Tube angle °	0 & 60
Acceleration time (secs)	25
Deceleration time (secs)	25
Autoclavable (frequency)	121°C (10)



Program 2	Speed	Time
1. Serum fast	4,000Rpm	300 secs
2. Serum 1	3,500Rpm	360 secs
3. Serum 2	3,000Rpm	420 secs
4. Urine	2,500Rpm	300 secs

Rotor	BRK5508S
Rotor type	8 x 5ml Swing out
Tube size max	13 x 82mm
Minimum Rcf (G)	10
Maximum speed Rpm	4,000
Maximum Rcf (G)	1500
Radius max cms Sample	8.5
Tube angle °	0
Acceleration time (secs)	20
Deceleration time (secs)	20
Autoclavable (frequency)	121°C (10)



# Micro Centrifuge

## Supplied with Fixed angle rotor



### FA4 Ambient Centrifuge

Programs	Speed	Time
1. Serum fast	6,000Rpm	240 secs
2. Serum 1	5,000Rpm	300 secs
3. Urine	2,500Rpm	420 secs
4. Sperm	2,300Rpm	480 secs
<b>HWD</b>	280x240x360mm	
<b>Weight</b>	12.8 Kg	
<b>Power</b>	125 Watts	

Display indicative only

#### PART NUMBERS. (230V 50/60HZ)

PrO-VET.FA4. With BRK5404 rotor

#### PART NUMBERS. (110V 60HZ)

1.PrO-VET.FA4. With BRK5404 rotor

Rotor	BRK5404
Rotor type	4 x 50ml. Fixed angle
Tube size max	30 x 120mm
Minimum Rcf (G)	10
Maximum speed Rpm	6,000
Maximum Rcf (G)	3,400
Radius max cms Sample	8.5
Tube angle °	30
Acceleration time (secs)	20
Deceleration time (secs)	20
Autoclavable (frequency)	121°C (10)

Sealed lid included





# Micro Centrifuge

## Supplied with Fixed angle rotor



### FA8 Ambient Centrifuge

Programs	Speed	Time
1. Serum fast	8,000Rpm	180 secs
2. Serum 1	6,000Rpm	300 secs
3. Serum 2	4,800Rpm	300 secs
4. Urine	2,500Rpm	300 secs
<b>HWD</b>	280x240x360mm	
<b>Weight</b>	12.8 Kg	
<b>Power</b>	125 Watts	

Display indicative only

#### PART NUMBER. (230V50/60HZ)

PrO-VET.FA8. With BRK5407 rotor

#### PART NUMBER.(110V 60HZ)

1.PrO-VET.FA8. With BRK5407 rotor

Rotor	BRK5407
Rotor type	4 x 15ml & 4 x 10ml
Tube size max	17x120mm & 13x100mm
Minimum Rcf (G)	10
Maximum speed Rpm	8,000
Maximum Rcf (G)	6,100
Radius max cms Sample	8.55
Tube angle °	30
Acceleration time (secs)	25
Deceleration time (secs)	25
Autoclavable (frequency)	121°C (10)

Sealed lid included



# Micro Centrifuge

## Supplied with Fixed angle rotors



### Serum.s Ambient Centrifuge

Program 1	Speed	Time
1. Serum fast	6,000Rpm	240 secs
2. Serum 1	5,000Rpm	300 secs
3. Urine	2,500Rpm	420 secs
4. Sperm	2,300Rpm	480 secs
<b>HWD</b>	280x240x360mm	
<b>Weight</b>	12.8 Kg	
<b>Power</b>	125 Watts	

Display indicative only

#### PART NUMBERS. (230V 50/60HZ)

PrO-VET.Serum s. With BRK5404 rotor and with BRK5407 rotor

#### PART NUMBERS. (110V 60HZ)

1.PrO-VET.Serum s With BRK5404 rotor and. With BRK5407 rotor

Rotor	BRK5404
Rotor type	4 x 50ml. Fixed angle
Tube size max	30 x 120mm
Minimum Rcf (G)	10
Maximum speed Rpm	6,000
Maximum Rcf (G)	3,400
Radius max cms Sample	8.5
Tube angle °	30
Acceleration time (secs)	20
Deceleration time (secs)	20
Autoclavable (frequency)	121°C (10)

Sealed lid included



Program 2	Speed	Time
1. Serum fast	8,000Rpm	180 secs
2. Serum 1	6,000Rpm	300 secs
3. Serum 2	4,800Rpm	300 secs
4. Urine	2,500Rpm	300 secs

Rotor	BRK5407
Rotor type	4 x 15ml & 4 x 10ml
Tube size max	17x120mm & 13x100mm
Minimum Rcf (G)	10
Maximum speed Rpm	8,000
Maximum Rcf (G)	6,100
Radius max cms Sample	8.55
Tube angle °	30
Acceleration time (secs)	25
Deceleration time (secs)	25
Autoclavable (frequency)	121°C (10)

Sealed lid included



# Micro Centrifuge

## Supplied with Haematocrit rotor and Fixed angle rotor



### PCV.s Ambient Centrifuge

Program 1	Speed	Time
1. PCV	13,000Rpm	300 secs
2. Serum 1	6,000Rpm	600 secs
3. Serum 2	5,000Rpm	300 secs
4. Urine	2,500Rpm	300 secs
<b>HWD</b>	280x240x360mm	
<b>Weight</b>	12.8 Kg	
<b>Power</b>	125 Watts	

Display indicative only

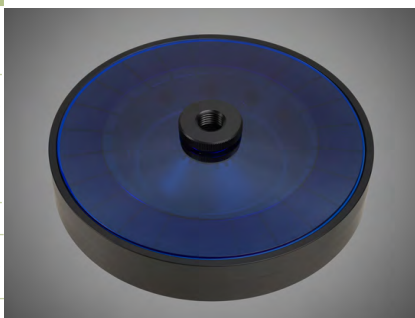
#### PART NUMBERS. (230V 50/60HZ)

PrO-VET.PCV s. With BRK5401 rotor and with BRK5408 rotor

#### PART NUMBERS. (110V 60HZ)

1.PrO-VET.PCV s. With BRK5401 rotor and with BRK5408 rotor

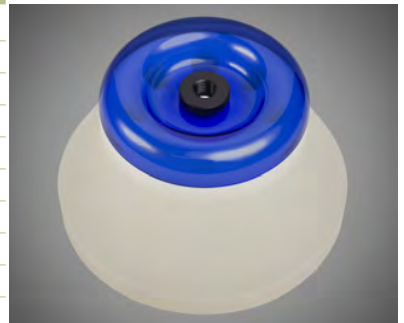
Rotor	BRK5401
Rotor type	24 x capillary & 12 x 2ml
Tube size max	2 x 75mm & 11 x 40mm
Minimum Rcf (G)	10
Maximum speed Rpm	13,000
Maximum Rcf (G)	15,800
Radius max cms Sample	8.4
Tube angle °	0 & 60
Acceleration time (secs)	25
Deceleration time (secs)	25
Autoclavable (frequency)	121°C (10)



# Micro rotors to 22,000 Rcf (G)

Program 2	Speed	Time
1. Serum fast	6,000Rpm	240 secs
2. Serum 1	5,000Rpm	300 secs
3. Serum 2	2,500Rpm	420 secs
4. Urine	2,300Rpm	480 secs

Rotor	BRK5408
Rotor type	8 x 15ml
Tube size max	17x120mm
Minimum Rcf (G)	10
Maximum speed Rpm	6,000
Maximum Rcf (G)	3,400
Radius max cms Sample	8.55
Tube angle °	30
Acceleration time (secs)	20
Deceleration time (secs)	20
Autoclavable (frequency)	121°C (10)



# Small Multi Centrifuge

## Supplied with Haematocrit rotor and Swing out rotor



### Multi Ambient Centrifuge

<b>HWD</b>	320x350x470mm
<b>Weight</b>	22.8 Kg
<b>Power</b>	175 Watts

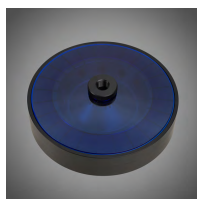
Display indicative only

#### PART NUMBERS. (230V 50/60HZ)

Pro-VET.Multi With BRK5401 rotor  
and With BRK5506 swing out rotor

#### PART NUMBERS. (110V 60HZ)

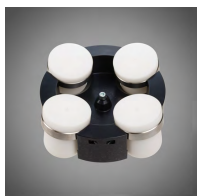
1.Pro-VET.Multi with BRK5401 rotor  
and With BRK5506 swing out rotor



BRK5401

### Ambient Centrifuge

Programs	Speed	Time
1. PCV	13,000Rpm	300 secs
2. Serum 1	6,000Rpm	600 secs
3. Serum 2	5,000Rpm	300 secs
4. Urine	2,500Rpm	300 secs

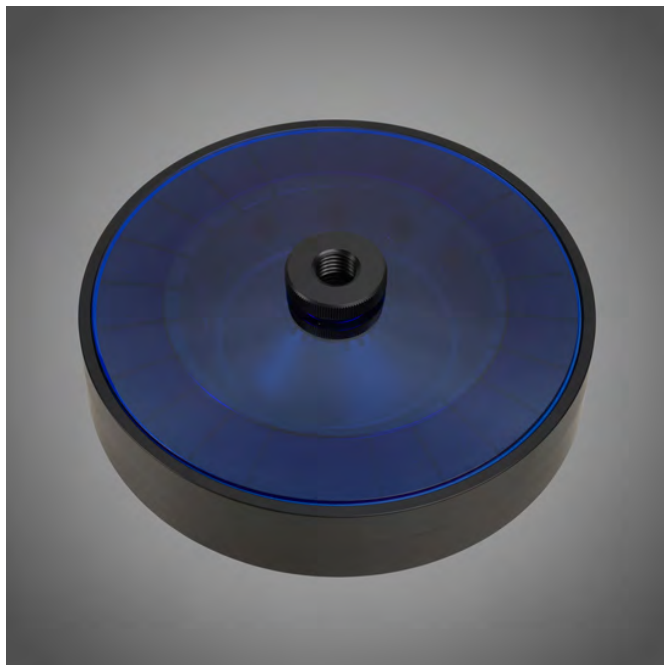


BRK5506

### Ambient Centrifuge

Programs	Speed	Time
1. Serum fast	4,000Rpm	300 secs
2. Faeces	3,000Rpm	600 secs
3. Urine	2,000Rpm	300 secs
4. Sperm	1,900Rpm	480 secs

## Included



Rotor	BRK5401
-------	---------

Rotor type	24 x capillary & 12 x 2ml
------------	---------------------------

Tube size max	2 x 75mm & 11 x 40mm
---------------	----------------------

Minimum Rcf (G)	10
-----------------	----

Maximum speed Rpm	13,000
-------------------	--------

Maximum Rcf (G)	15,800
-----------------	--------

Radius max cms Sample	8.4
-----------------------	-----

Tube angle °	0 & 60
--------------	--------

Acceleration time (secs)	20
--------------------------	----

Deceleration time (secs)	20
--------------------------	----

Autoclavable (frequency)	121°C (10)
--------------------------	------------

## Included



Rotor	BRK5506
Rotor type	4 x 100ml. Swing out
Tube size max	45 x 100mm
Minimum Rcf (G)	10
Maximum speed Rpm	4,000
Maximum Rcf (G)	2,200
Radius max cms Sample	12.3
Tube angle °	0
Acceleration time (secs)	25
Deceleration time (secs)	25
Autoclavable (frequency)	121°C (10)



Inclusive of one set of adaptors choose from below  
**Adaptors for Swing out rotor BRK5506** Pack of 4

Capacity	Size. mm	Part Number	Tubes per rotor
<b>Tube type: Micro with cap. Shape: Point</b>			
0.5ml	8 x 20	AM405-5	52
1.5ml	11 x 38	AM420-5	36
2.0ml	11 x 38	AM420-5	36
0.2ml	6 x 20	AM402-5	96
0.4ml	6 x 30	AM404-5	96
<b>Tube type: Plain no cap. Shape: Round</b>			
1ml	6 x 45	AR401-5	36
3ml	10 x 60	AR403-5	28
5ml	12 x 75	AR405-5	20
6ml	12 x 82	AR405-5	20
7ml	12 x 100	AR407-5	20
9/10ml	14 x 100	AR409-5	20
15ml	17 x 100	AR415-5	16
25ml	24 x 100	AR425-5	12
50ml	34 x 100	AR450-5	4
100ml	45 x 100	AR4100-5	4
125ml	52 x 100	AR4125-5	4
<b>Tube type: Falcon with cap. Shape: Point</b>			
15ml	17 x 120	AF415-5	4
50ml	29 x 115	AF450-5	4
<b>Tube type: Falcon with cap. Shape: Square</b>			
12ml	17 x 100	AFS412-5	8
15ml	17 x 120	AFS415-5	4
25ml	25 x 90	AFS425-5	4
30ml	25 x 110	AFS430-5	4
50ml	29 x 115	AFS450-5	4
<b>Tube type: Nalgene, Oakridge with cap. Shape: Round</b>			
10ml	15 x 80	ANO410-5	12
30ml	26 x 95	ANO430-5	4
50ml	29 x 107	ANO450-5	4
100ml	38 x 106	ANO485-5	4
<b>Tube type: Monovette. Shape Square</b>			
1.1-1.4ml	8 x 82	AM4014-5	40
2.7-3ml	11 x 82	AM403-5	40
2.6-2.9ml	13 x 81	AM429-5	28
4.5-5ml	11 x 108	AM403-5	32
7.5-8.2ml	13 x 106	AM479-5	24
4.5-5ml	15 x 92	AM450-5	20
9-10ml	16 X 108	AM490-5	16
<b>Tube type: Vacutainer. Shape: Round</b>			
1.6-5ml	13 x 82	AV416-5	24
4-7ml	13 x 106	AV450-5	24
7-9ml	15 x 92	AV470-5	20
8.5-10ml	16 x 108	AV480-5	16
<b>Tube type: Vacuette. Shape: Round</b>			
1.6-5ml	13 x 82	AV416-5	24
4-7ml	13 x 106	AV450-5	24
7-9ml	15 x 92	AV470-5	20
8.5-10ml	16 x 108	AV480-5	16



# Small Centrifuge

## Supplied with Swing out rotor



Programs	Speed	Time
1. Serum fast	4,000Rpm	300 secs
2. Serum 1	3,500Rpm	360 secs
3. Urine	2,000Rpm	300 secs
4. Sperm	1,800Rpm	480 secs
<b>HWD</b>	320x350x470mm	
<b>Weight</b>	22.8 Kg	
<b>Power</b>	175 Watts	

Display indicative only

### PART NUMBERS. (230V 50/60HZ)

PrO-VET.Equine so. With BRK5508M rotor

### PART NUMBERS. (110V 60HZ)

1.PrO-VET.Equine so. With BRK5508M rotor

Rotor	BRK5508M
Rotor type	8 x 10ml
Tube size max	15 x 105mm
Minimum Rcf (G)	10
Maximum speed Rpm	4,000
Maximum Rcf (G)	2,200
Radius max cms Sample	12.3
Tube angle °	0
Acceleration time (secs)	20
Deceleration time (secs)	20
Autoclavable (frequency)	121°C (10)



# Small Centrifuge Supplied with Cytology rotor



## Cyto Ambient Centrifuge

Programs	Speed	Time
1. Low	200Rpm	600 secs
2. Medium	750Rpm	600 secs
3. High	1,500Rpm	500 secs
4. Maximum	2,500Rpm	500 secs
<b>HWD</b>	320x350x470mm	
<b>Weight</b>	22.8 Kg	
<b>Power</b>	175 Watts	

Display indicative only

### PART NUMBER. (230V50/60HZ)

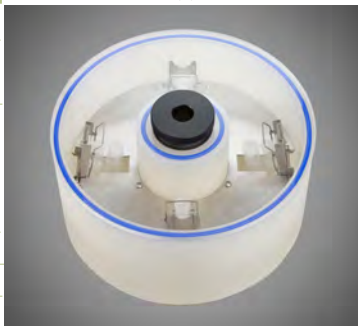
PrO-VET.Cyto. With BRK5940 rotor

### PART NUMBER.(110V 60HZ)

1.PrO-VET.Cyto. With BRK5940 rotor

Rotor	BRK5940
Rotor type	4 x Dual holder
Tube size max	0.2-1ml & 6ml max
Minimum Rcf (G)	10
Maximum speed Rpm	2,500
Maximum Rcf (G)	550
Radius max cms Sample	8.0
Tube angle °	0
Acceleration time (secs)	20
Deceleration time (secs)	20
Autoclavable (frequency)	121°C (10)

Supplied with Blue Lid



# PrO-Equine. PrO-Bovine Centrifuge

20



Display indicative only

## PART NUMBERS

PrO-VET.Equine. (230V50/60Hz)  
1.PrO-VET.Equine (110V 60Hz)

**(Rotor required)** see the following pages

## PART NUMBERS

PrO-VET. Bovine. (230V50/60Hz)  
1.PrO-VET. Bovine (110V 60Hz)

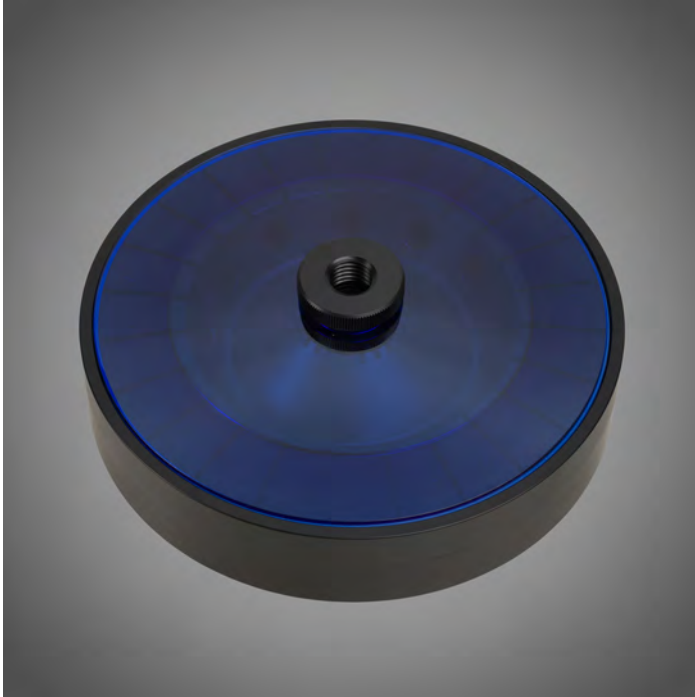
**(Rotor required)** see the following pages

## Ambient Centrifuge

<b>Speed</b>	15,000 Rpm max (10 Rpm steps)
<b>Rcf Max</b>	10 - 22,000 G
<b>Timer</b>	0-99 Mins & Hold (30 sec steps)
<b>Dims HWD</b>	320 x 350 x 470mm
<b>Weight</b>	22.8 Kg (without rotor)
<b>Power</b>	175 Watts
<b>Memory</b>	99 programs
<b>Accel rates</b>	10 programs
<b>Decel rates</b>	10 programs

**NOTE.** Speeds and Rcf are Rotor dependant

# Haematocrit rotor



Rotor	BRK5401
Rotor type	24 x capillary & 12 x 2ml
Tube size max	2 x 75mm & 11 x 40mm
Minimum Rcf (G)	10
Maximum speed Rpm	13,000
Maximum Rcf (G)	15,800
Radius max cms Sample	8.4
Tube angle °	0 & 60
Acceleration time (secs)	20
Deceleration time (secs)	20
Autoclavable (frequency)	121°C (10)

## Swing out rotor to 2,200 Rcf (G)



Adaptor's required  
See the following  
page

Rotor	BRK5506
Rotor type	4 x 100ml. Swing out
Tube size max	45 x 100mm
Minimum Rcf (G)	10
Maximum speed Rpm	4,000
Maximum Rcf (G)	2,200
Radius max cms Sample	12.3
Tube angle °	0
Acceleration time (secs)	25
Deceleration time (secs)	25
Autoclavable (frequency)	121°C (10)

Adaptors required, choose from below  
Adaptors for Swing out rotor BRK5506

Capacity	Size. mm	Part Number	Tubes per rotor
<b>Tube type: Micro with cap. Shape: Point</b>			
0.5ml	8 x 20	AM605-1	92
1.5ml	11 x 38	AM620-1	60
2.0ml	11 x 38	AM620-1	60
0.2ml	6 x 20	AM602-1	144
0.4ml	6 x 30	AM604-1	144
<b>Tube type: Plain no cap. Shape: Round</b>			
1ml	6 x 45	AR601-1	36
3ml	10 x 60	AR603-1	28
5ml	12 x 75	AR605-1	20
6ml	12 x 82	AR605-1	20
7ml	12 x 100	AR607-1	20
9/10ml	14 x 100	AR609-1	20
15ml	17 x 100	AR615-1	16
25ml	24 x 100	AR625-1	12
50ml	34 x 100	AR650-1	4
100ml	45 x 100	AR6100-1	4
125ml	52 x 100	AR6150-1	4
<b>Tube type: Falcon with cap. Shape: Point</b>			
15ml	17 x 120	AF615-1	16
50ml	29 x 115	AF650-1	4
<b>Tube type: Falcon with cap. Shape: Square</b>			
12ml	17 x 100	AFS612-1	12
15ml	17 x 120	AFS615-1	12
25ml	25 x 90	AFS625-1	4
30ml	25 x 110	AFS630-1	4
50ml	29 x 115	AFS650-1	4
<b>Tube type: Nalgene. Oakridge with cap. Shape: Round</b>			
10ml	15 x 80	ANO610-1	20
30ml	26 x 95	ANO630-1	4
50ml	29 x 107	ANO650-1	4
100ml	38 x 106	ANO685-1	4
<b>Tube type: Monovette. Shape Square</b>			
1.1-1.4ml	8 x 82	AM6014-1	52
2.7-3ml	11 x 82	AM603-1	52
2.6-2.9ml	13 x 81	AM629-1	28
4.5-5ml	11 x 108	AM603-1	52
7.5-8.2ml	13 x 106	AM679-1	28
4.5-5ml	15 x 92	AM650-1	20
9-10ml	16 X 108	AM690-1	20
<b>Tube type: Vacutainer. Shape: Round</b>			
1.6-5ml	13 x 82	AV616-1	28
4-7ml	13 x 106	AV650-1	28
7-9ml	15 x 92	AV670-1	16
8.5-10ml	16 x 108	AV680-1	16
<b>Tube type: Vacuette. Shape: Round</b>			
1.6-5ml	13 x 82	AV616-1	28
4-7ml	13 x 106	AV650-1	28
7-9ml	15 x 92	AV670-1	16
8.5-10ml	16 x 108	AV680-1	16



# Micro rotors available

24



Sealed Lid included

Rotor	BRK5424	BRK5436	BRK5448	BRK5494
Rotor type	24 x 2.2ml	36 x 0.5ml	48 x 0.2 to 0.4ml	4 x Pcr Strips
Tube size max	11 x 50mm	8 x 30mm	6 x 40mm	6 x 40mm
Minimum Rcf (G)	10	10	10	10
Maximum Rcf (G)	22,000	22,000	22,000	22,000
Maximum Rpm	15,000	15,000	15,000	15,000
Radius max cms	8.75cms	8.75cms	8.75cms	8.75cms
Sample tube angle °	45	45	45	45
Acceleration time (secs)	15	15	15	15
Deceleration time (secs)	15	15	15	15
Autoclavable (frequency)	121°C (10)	121°C (10)	121°C (10)	121°C (10)

## Reducers pack of 4

<b>Rotor</b>	BRK5424
<b>Part number</b>	RS04 (0.2- 0.4ml)
<b>Tube size max</b>	6 x 30mm
<b>Part number</b>	RS05 (0.5ml)
<b>Tube size max</b>	8 x 30mm



# Fixed angle rotors available



Sealed lid included

Rotor	BRK5412	BRK5406
Rotor type	12 x 15ml	6 x 50m
Tube size max	17 x 120mm	30 x 120mm
Minimum Rcf (G)	10	10
Maximum Rcf (G)	3,800	3,800
Maximum Speed	6,000	4,000
Radius max cms	9.5	9.5
Sample tube angle °	30	30
Acceleration time (secs)	20	20
Deceleration time (secs)	20	20
Autoclavable (frequency)	121°C (10)	121°C (10)

## Reducers pack of 4

<b>Rotor</b>	BRK5412
<b>Part number</b>	RM05 (5ml)
<b>Tube size max</b>	13 x 80mm
<b>Part number</b>	RM10 (10ml)
<b>Tube size max</b>	16 x 100mm

## Reducers pack of 4

<b>Rotor</b>	BRK5406
<b>Part number</b>	RM15 (15ml)
<b>Tube size max</b>	17 x 120mm
<b>Part number</b>	RM25 (25ml)
<b>Tube size max</b>	25 x 100mm

# Microtitor plate rotor available



Rotor	BRK5740
Buckets	Complete with buckets Available with 4 x STD Plates or 2 x High
Plate size max	85mmx128mm
Minimum Rcf (G)	10
Maximum Rcf (G)	1700
Maximum Rpm	3500
Radius max cms	12.4
Sample tube angle °	0°C (10)
Acceleration time (secs)	20
Deceleration time (secs)	20
Autoclavable (frequency)	121°C (10)
Minimum Temperature @ 23°C	4°C

# Large Cytology rotor



Rotor	4460 (12 Place)
Rotor type	12 x 0.2 to 6ml
Tube size max	Single or double
Minimum Rcf (G)	10
Maximum Rcf (G)	500
Maximum Speed Rpm	2000
Radius max cms	11.2
Sample tube angle °	0
Acceleration time (secs)	25
Deceleration time (secs)	25
Autoclavable (frequency)	121°C (10)

## Accessories



**4446**

Double sample holder with card (up to 1ml)



**4444**

Single sample holder with card (up to 1ml)



**4600**

Double sample holder with card (up to 6ml)



**4462**

Stainless steel clips

Call us on: Tel +44(0)2392 631225  
or email

General: info@centurionscientific.co.uk

Sales: sales@centurionscientific.co.uk

**Head Office**

The Old Stables  
Church Farm  
Stoughton  
Chichester  
West Sussex  
PO18 9JL  
United Kingdom.

[www.Pro-Vetcentrifuge.com](http://www.Pro-Vetcentrifuge.com)

**Research & service**

The Old equine Barn  
Church Farm  
Stoughton  
Chichester  
PO18 9JL. UK

**Ambient  
manufacturing**

The Old Grain Barn  
Church Farm  
Stoughton  
Chichester  
PO18 9JL. UK

**Refrigeration  
Manufacturing**

The Old Drier Barn  
Church Farm  
Stoughton  
Chichester  
PO18 9JL. UK

**Logistics**

The Old Storage Barn  
Church Farm  
Stoughton  
Chichester  
PO18 9JL. UK

Distributed by

Follow Centurion Scientific

