

Laboratory Industrial OVENS



JSR

[주] 제이에스리서치
JS Research Inc.

Ovens

SELECTION GUIDE

LABORATORY INDUSTRIAL

Wide range of Choice

JSOF-Series Forced Convection Oven



- ▶ Max. 250 °C
- ▶ Constant Temperature
- ▶ Timer On / Off
- ▶ RS-232C or 485 [OPTION]
- ▶ Program Controller
- 5 PTN 80 SEG [OPTION]



MODEL	CAPACITY	TEMPERATURE	ACCURACY
JSOF-050	48 L	amb. + 10 °C ~ 250 °C	± 0.2 °C
JSOF-100	100 L		± 0.3 °C
JSOF-150	151 L		± 0.3 °C
JSOF-250	252 L		± 0.3 °C

JSON-Series Gravity Convection Oven



- ▶ Max. 250 °C
- ▶ Constant Temperature
- ▶ Timer On / Off
- ▶ RS-232C or 485 [OPTION]
- ▶ Program Controller
- 5 PTN 80 SEG [OPTION]



MODEL	CAPACITY	TEMPERATURE	ACCURACY
JSON-050	48 L	amb. + 10 °C ~ 250 °C	± 0.3 °C
JSON-100	100 L		± 0.3 °C
JSON-150	151 L		± 0.5 °C
JSON-250	252 L		± 0.5 °C

JSOF-T Series Upright Convection Oven



- ▶ Max. 250 °C
- ▶ Constant Temperature
- ▶ Timer On / Off
- ▶ RS-232C or 485 [OPTION]
- ▶ Program Controller
- 5 PTN 80 SEG [OPTION]



MODEL	CAPACITY	TEMPERATURE	ACCURACY
JSOF-250T	250 L	amb. + 10 °C ~ 250 °C	± 0.3 °C
JSOF-400T	372 L		± 0.3 °C
JSOF-700T	655 L		± 0.3 °C

JSOF-S Series Dry Heat Sterilizer

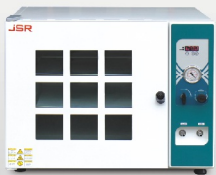


- ▶ Max. 250 °C
- ▶ Constant Temperature
- ▶ Timer On / Off



MODEL	CAPACITY	TEMPERATURE	ACCURACY
JSOF-030S	33 L	amb. + 10 °C ~ 250 °C	± 0.2 °C
JSOF-050S	48 L		± 0.2 °C
JSON-030S	33 L		± 0.3 °C
JSON-050S	48 L		± 0.3 °C

JSVO-Series Vacuum Oven



- ▶ Max. 250 °C
- ▶ Constant Temperature
- ▶ Timer On / Off
- ▶ 760 mmHg Vacuum



MODEL	CAPACITY	TEMPERATURE	ACCURACY
JSVO-30T	27 L	amb. + 10 °C	± 2.0 °C
JSVO-60T	64 L	~ 250 °C	± 2.0 °C

JSOF-H Series 350 °C Hi-Temp Oven



- ▶ Max. 350 °C
- ▶ Constant Temperature
- ▶ Timer On / Off
- ▶ RS-232C or 485 [OPTION]
- ▶ Program Controller
5 PTN 80 SEG [OPTION]



MODEL	CAPACITY	TEMPERATURE	ACCURACY
JSOF-030H	27 L	amb. + 10 °C ~ 350 °C	± 0.2 °C
JSOF-100H	96 L		± 0.3 °C
JSOF-150H	150 L		± 0.3 °C

JSCO-Series HEPA Filter Clean Air Oven



- ▶ H14 (ISO Class5) 99.995% efficiency HEPA Filter
- ▶ Max. 250 °C
- ▶ Program Controller
5 PTN 80 SEG
- ▶ RS-232C or 485 [OPTION]



MODEL	CAPACITY	TEMPERATURE	ACCURACY
JSCO-150T	168 L	amb. + 10 °C ~ 250 °C	± 0.3 °C
JSCO-300T	336 L		± 0.3 °C
JSCO-1200T	1200 L		± 0.5 °C

JSOF-W JSIO-Series Industrial Oven



- ▶ Max. 250 °C
- ▶ Constant Temperature
- ▶ Timer On / Off
- ▶ RS-232C or 485 [OPTION]
- ▶ Program Controller
5 PTN 80 SEG [OPTION]



MODEL	CAPACITY	TEMPERATURE	ACCURACY
JSOF-400W	2 x 432 L	amb. + 10 °C ~ 250 °C	± 0.3 °C
JSOF-600W	2 x 612 L		± 0.3 °C
JSIO-400T	410 L		± 0.3 °C
JSIO-960T	960 L		± 0.5 °C
JSIO-1400T	1386 L		± 0.5 °C
			± 0.5 °C

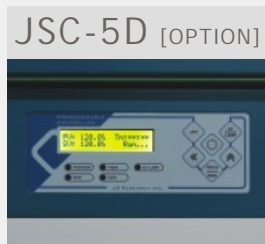
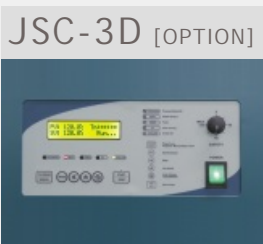
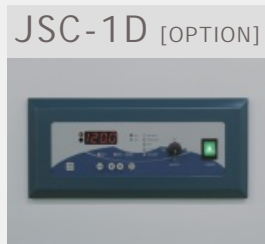
Ovens

FEATURE

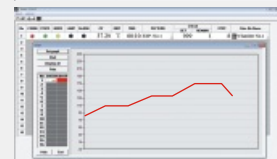
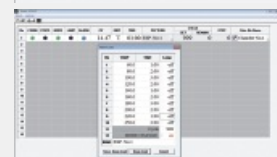
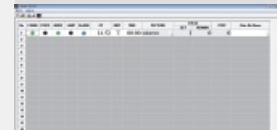
PRECISION CONTROL HIGH PERFORMANCE Standards & Options

Controller Guide

	JSC-0D Basic Controller	JSC-1D Digital PID Controller	JSC-3D Programmable Controller	JSC-5D Programmable Controller
Type	Digital PID		16-bit Microprocessor	
Display	LED		2-Line Back light LCD	
Operation	Constant Temperature		Constant Temp. Mode Program Mode	
Accuracy	± 0.1 °C		± 0.1 °C	
Timer	Auto START/STOP		Auto STOP	
Timer Scale	Max. 99min 59sec / 99hr 59min / 99 day 23hr selectable		Max. 99min 59sec / 99hr 59min selectable	
Programming	n/a	n/a	Yes	Yes
Pattern Memory			1 Pattern	5 Patterns
Max. Segment			11 Segments	80 Segments
Max. Repeats			999 or unlimited Segment Skip	999 or unlimited Segment Skip Pattern Link
RS-232C or RS-485	n/a	Yes [OPTION]	Yes [OPTION]	Yes [OPTION]
PC Software	n/a	Yes [OPTION]	Yes [OPTION]	n/a
Calibration	Yes	Yes	Yes	Yes
Auto-tuning	Yes	Yes	Yes	Yes



▶ PC Software [OPTION]



- ▶ RS-232C Serial Port Communication
- ▶ Turn On and Off control
- ▶ Temperature and Timer Setting
- ▶ Pattern Programming and uploading
- ▶ Current temperature Graph Rendering
- ▶ Temperature Data Logging
- ▶ Alarm Signal
- ▶ RS-232C 시리얼 포트 통신
- ▶ 작동, 정지 제어
- ▶ 온도 설정, 타이머 설정 기능
- ▶ 패턴 프로그래밍 기능
- ▶ 작동 중 온도 그래프 표시 기능
- ▶ 온도 데이터 수집 및 저장 기능
- ▶ 알람 현황 표시

ASCII Data Collection

Date	Time	Temp	Step	Seg	Cycle
2014:01:07	09:00:00	120.00	00:05	03	001/999
2014:01:07	09:00:10	120.01	00:05	03	001/999
2014:01:07	09:00:20	120.01	00:05	03	001/999
2014:01:07	09:00:30	120.00	00:05	03	001/999

Performance & Convenience

▶ Construction



- ▶ Durable epoxy powdercoated metallic casing
- ▶ Ventilation damper
- ▶ 내구성이 뛰어난 에폭시 분체 도장
- ▶ 수분 및 증기 배출 배기구 장착

▶ Chamber



- ▶ Corrosion resistant Stainless Steel 304 chamber with seamless round cornered edge allows easy cleaning and prevent leakage
- ▶ 내부식성이 뛰어난 Stainless Steel 304 재질의 챔버 코너는 이음새없이 라운드 처리 되어 있어 세척이 간편

▶ Door Window



- ▶ Double layered glass window for easy observation of samples
- ▶ Non-contact door switch cut-off heater and blower
- ▶ 이중 강화유리 도어 투시창
- ▶ 비접촉식 도어센서 장착, 도어 개방시 히터 및 팬 동작 정지

▶ Removable Shelf



- ▶ Removable and height adjustable Stainless Steel Wire Shelf
- ▶ 25mm 간격으로 높이 조절 가능한 스테인레스 스틸 와이어 선반

Safety



- ▶ DUAL OVER TEMP. CUT-OFF
 - 1) Digital system cut-off heater and AUDIO VISUAL ALARM in case +2°C above set temperature
 - 2) Analog system cut-off heater 10% above set temp.
- ▶ MAX TEMP CUT-OFF heater and AUDIO VISUAL ALARM when +1°C above maximum limit
- ▶ DOOR SENSOR : Non-contact magnetic door switch cut-off heater and/or blower when door opened
- ▶ SENSOR DISCONNECTION ALARM
- ▶ OVER CURRENT CUT-OFF : Electrical Leakage Breaker

▶ 이중과열방지장치

- 1) 설정 온도 +2 °C 초과 시 히터 차단 및 시청각 알람
- 2) 콘트롤러 오류로 지정 온도 10% 초과 시 히터 차단

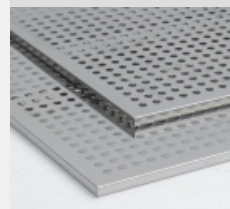
▶ 최고온도알람기능 : 작동한계 온도 +1°C 초과시 히터 차단

▶ 도어스위치 : 도어를 열면 히터와 팬이 정지하여 열기로 부터 사용자를 보호하고 과열 방지

▶ 센서단락알람

▶ 누전차단기 : 전기누설 시 주전원 차단

▶ Option



- ▶ Stainless Steel 304 Perforated Shelf
- ▶ Stainless Steel 304 타공 선반

Laboratory

STANDARD OVENS

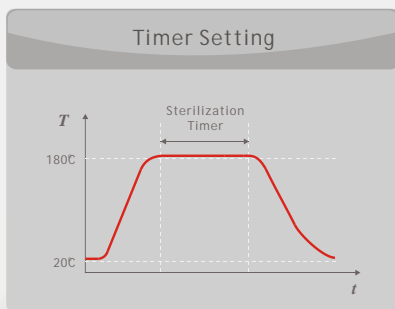
DRY HEAT STERILIZER

Compact & Efficient



Dry Heat Sterilizer

Dry Heat Sterilizer is a common instrument to be used to drying, heating and sterilizing objects by heating air up to 160°C or 180°C with gravity or forced convection system during specified sterilizing exposure time range from 30 to 60 minutes of sterilization exposure time



Specifications

Heating	Forced Air Convection or Gravity Air Convection
Temp. Range	ambient + 10°C ~ 250°C
Accuracy	± 0.2 °C at 180°C (JSOF-030S)
Uniformity	± 1.0 °C at 180°C (JSOF-030S)
Control	Microprocessor PID Control Auto START / STOP Timer
Sensor	Class A Pt-100 Ω Sensor
Safety	Over-Temperature Cut-Off Over Current Cut-Off
Material	Body : Epoxy Powder Coated Steel Chamber : Stainless Steel 304 Insulation : 50mm Woven Mineral Wool Including Stainless Steel Wire Shelf
Electric	220 ± 10% VAC 50/60Hz 1-Phase

Plug config.



or



CEE 7/7 Schuko

BS 1363

Control Accuracy

- ± 0.1 °C Digital PID Controller with automatic START/STOP timer max. 99min 59sec / 99hr 59min / 99 day 23hr
- Temperature calibration, auto-tuning function
- Class A Pt-100 Ω sensor
- 정밀한 PID 컨트롤러는 온도를 ± 0.1 °C 단위로 제어
- 예약 / 정지 타이머 내장 99분59초 / 99시간59분 / 99일23시간
- 온도보정, 오토튜닝 기능 내장
- Class A Pt-100 Ω 온도 센서

MAX TEMPERATURE

Max 250 °C

TEMPERATURE CONTROL

Constant Temperature Controller

TIMER

Timer On / Off

Performance

- ▶ Choice of Forced or Gravity air convection
- ▶ Separate heating compartment prevents contamination and maintenance free
- ▶ 50mm thick high thermal efficiency mineral wool with woven aluminum barrier sheet saves energy and less dust

- ▶ 강제공기순환식 또는 자연대류방식 선택
- ▶ 가열챔버가 분리 되어 있어 액체 흘림으로 인한 오염과 고장이 적음
- ▶ 50mm 두께의 고효율 단열재는 알미늄 피복층이 있어 에너지 소비가 적고 분진이 없음

Convenience

- ▶ Stainless Steel 304 Chamber with seamless round cornered edge allows easy cleaning and prevents leakage
- ▶ Removable and height adjustable shelf by 25mm spacing
- ▶ Easy to open and air-tight one touch door latch
- ▶ Opening size adjustable ventilation damper
- ▶ Non-contact door switch cut-off heater and/or blower
- ▶ 챔버의 코너는 이음새 없이 라운드 처리 되어 있어 세척이 간편하고 오염 방지
- ▶ 25mm 간격으로 높이 조절 가능한 선반
- ▶ 원터치 방식의 도어 잠금 장치
- ▶ 수분 및 증기를 배출할 수 있는 배기구 장착
- ▶ 비접촉식 도어센서 장착, 도어 개방 시 히터, 팬 동작 정지

Safety

- ▶ DUAL OVERTEMP. CUT-OFF
- ▶ MAX TEMP CUT-OFF
- ▶ DOOR SENSOR
- ▶ SENSOR DISCONNECTION ALARM
- ▶ OVER CURRENT CUT-OFF : Electrical Leakage Breaker

Accessories

Art No.	Descriptions
	Perforated Shelf, Stainless Steel 304
PHS-A02	for JSOF-030S W320x D250 mm
PHS-A03	for JSOF-050S W370x D280 mm
PHS-A02	for JSON-030S W320x D250 mm
PHS-A03	for JSON-050S W370x D280 mm
	Wire Shelf, Stainless Steel 304
PHS-B02	for JSOF-030S W320x D250 mm
PHS-B03	for JSOF-050S W370x D280 mm
PHS-B02	for JSON-030S W320x D250 mm
PHS-B03	for JSON-050S W370x D280 mm
PHS-A99	Shelf Support, Set of 4

Ordering Information

	JSOF-030S	JSOF-050S	JSON-030S	JSON-050S
Air Circulation	Forced Convection		Gravity Convection	
Chamber Volume (Capacity)	33 L	48 L	33 L	48 L
Dimensions Inner	350 x 270 x 350	400 x 300 x 400	350 x 270 x 350	400 x 300 x 400
W x D x H mm Outer	510 x 555 x 660	560 x 585 x 710	510 x 475 x 660	560 x 505 x 710
Temperature Range	ambient +10 °C to 250 °C			
Accuracy at 180°C	± 0.2 °C	± 0.2 °C	± 0.3 °C	± 0.3 °C
Uniformity at 180°C	± 1.0 °C	± 1.0 °C	± 2.0 °C	± 2.0 °C
Heat up time to 180°C	15 min.	15 min.	15 min.	15 min.
No. of Shelves / Maximum No.	2 / 10	2 / 12	2 / 10	2 / 12
No. of Ventilation damper	1	1	1	1
Heater Capacity	800 W	1.0 kW	800 W	1.2 kW
Power Rating	3.8 Amp	4.7 Amp	3.7 Amp	5.5 Amp
Power Plug	CEE 7/7 Schuko			