

Laboratory Industrial OVENS



JSR

[주] 제이에스리서치
JS Research Inc.

Ovens

SELECTION GUIDE

LABORATORY INDUSTRIAL

Wide range of Choice

JSOF-Series Forced Convection Oven



- ▶ Max. 250 °C
- ▶ Constant Temperature
- ▶ Timer On / Off
- ▶ RS-232C or 485 [OPTION]
- ▶ Program Controller
- 5 PTN 80 SEG [OPTION]



MODEL	CAPACITY	TEMPERATURE	ACCURACY
JSOF-050	48 L	amb. + 10 °C ~ 250 °C	± 0.2 °C
JSOF-100	100 L		± 0.3 °C
JSOF-150	151 L		± 0.3 °C
JSOF-250	252 L		± 0.3 °C

JSON-Series Gravity Convection Oven



- ▶ Max. 250 °C
- ▶ Constant Temperature
- ▶ Timer On / Off
- ▶ RS-232C or 485 [OPTION]
- ▶ Program Controller
- 5 PTN 80 SEG [OPTION]



MODEL	CAPACITY	TEMPERATURE	ACCURACY
JSON-050	48 L	amb. + 10 °C ~ 250 °C	± 0.3 °C
JSON-100	100 L		± 0.3 °C
JSON-150	151 L		± 0.5 °C
JSON-250	252 L		± 0.5 °C

JSOF-T Series Upright Convection Oven



- ▶ Max. 250 °C
- ▶ Constant Temperature
- ▶ Timer On / Off
- ▶ RS-232C or 485 [OPTION]
- ▶ Program Controller
- 5 PTN 80 SEG [OPTION]



MODEL	CAPACITY	TEMPERATURE	ACCURACY
JSOF-250T	250 L	amb. + 10 °C ~ 250 °C	± 0.3 °C
JSOF-400T	372 L		± 0.3 °C
JSOF-700T	655 L		± 0.3 °C

JSOF-S Series Dry Heat Sterilizer

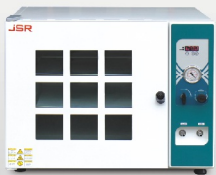


- ▶ Max. 250 °C
- ▶ Constant Temperature
- ▶ Timer On / Off



MODEL	CAPACITY	TEMPERATURE	ACCURACY
JSOF-030S	33 L	amb. + 10 °C ~ 250 °C	± 0.2 °C
JSOF-050S	48 L		± 0.2 °C
JSON-030S	33 L		± 0.3 °C
JSON-050S	48 L		± 0.3 °C

JSVO-Series Vacuum Oven



- ▶ Max. 250 °C
- ▶ Constant Temperature
- ▶ Timer On / Off
- ▶ 760 mmHg Vacuum



MODEL	CAPACITY	TEMPERATURE	ACCURACY
JSVO-30T	27 L	amb. + 10 °C	± 2.0 °C
JSVO-60T	64 L	~ 250 °C	± 2.0 °C

JSOF-H Series 350 °C Hi-Temp Oven



- ▶ Max. 350 °C
- ▶ Constant Temperature
- ▶ Timer On / Off
- ▶ RS-232C or 485 [OPTION]
- ▶ Program Controller
5 PTN 80 SEG [OPTION]



MODEL	CAPACITY	TEMPERATURE	ACCURACY
JSOF-030H	27 L	amb. + 10 °C ~ 350 °C	± 0.2 °C
JSOF-100H	96 L		± 0.3 °C
JSOF-150H	150 L		± 0.3 °C

JSCO-Series HEPA Filter Clean Air Oven



- ▶ H14 (ISO Class5) 99.995% efficiency HEPA Filter
- ▶ Max. 250 °C
- ▶ Program Controller
5 PTN 80 SEG
- ▶ RS-232C or 485 [OPTION]



MODEL	CAPACITY	TEMPERATURE	ACCURACY
JSCO-150T	168 L	amb. + 10 °C ~ 250 °C	± 0.3 °C
JSCO-300T	336 L		± 0.3 °C
JSCO-1200T	1200 L		± 0.5 °C

JSOF-W JSIO-Series Industrial Oven



- ▶ Max. 250 °C
- ▶ Constant Temperature
- ▶ Timer On / Off
- ▶ RS-232C or 485 [OPTION]
- ▶ Program Controller
5 PTN 80 SEG [OPTION]



MODEL	CAPACITY	TEMPERATURE	ACCURACY
JSOF-400W	2 x 432 L	amb. + 10 °C ~ 250 °C	± 0.3 °C
JSOF-600W	2 x 612 L		± 0.3 °C
JSIO-400T	410 L		± 0.3 °C
JSIO-960T	960 L		± 0.5 °C
JSIO-1400T	1386 L		± 0.5 °C
			± 0.5 °C

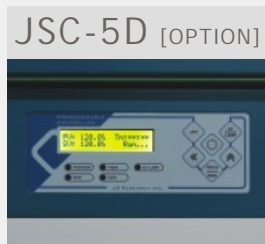
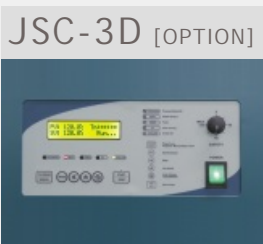
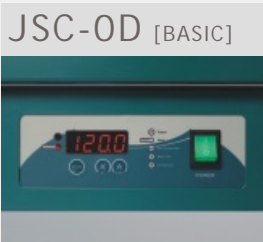
Ovens

FEATURE

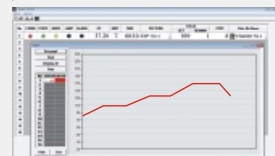
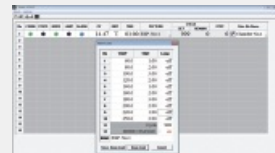
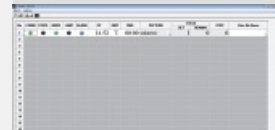
PRECISION CONTROL HIGH PERFORMANCE Standards & Options

Controller Guide

	JSC-0D Basic Controller	JSC-1D Digital PID Controller	JSC-3D Programmable Controller	JSC-5D Programmable Controller
Type	Digital PID		16-bit Microprocessor	
Display	LED		2-Line Back light LCD	
Operation	Constant Temperature		Constant Temp. Mode Program Mode	
Accuracy	± 0.1 °C		± 0.1 °C	
Timer	Auto START/STOP		Auto STOP	
Timer Scale	Max. 99min 59sec / 99hr 59min / 99 day 23hr selectable		Max. 99min 59sec / 99hr 59min selectable	
Programming	n/a	n/a	Yes	Yes
Pattern Memory			1 Pattern	5 Patterns
Max. Segment			11 Segments	80 Segments
Max. Repeats			999 or unlimited Segment Skip	999 or unlimited Segment Skip Pattern Link
RS-232C or RS-485	n/a	Yes [OPTION]	Yes [OPTION]	Yes [OPTION]
PC Software	n/a	Yes [OPTION]	Yes [OPTION]	n/a
Calibration	Yes	Yes	Yes	Yes
Auto-tuning	Yes	Yes	Yes	Yes



▶ PC Software [OPTION]



- ▶ RS-232C Serial Port Communication
- ▶ Turn On and Off control
- ▶ Temperature and Timer Setting
- ▶ Pattern Programming and uploading
- ▶ Current temperature Graph Rendering
- ▶ Temperature Data Logging
- ▶ Alarm Signal
- ▶ RS-232C 시리얼 포트 통신
- ▶ 작동, 정지 제어
- ▶ 온도 설정, 타이머 설정 기능
- ▶ 패턴 프로그래밍 기능
- ▶ 작동 중 온도 그래프 표시 기능
- ▶ 온도 데이터 수집 및 저장 기능
- ▶ 알람 현황 표시

ASCII Data Collection

Date	Time	Temp	Step	Seg	Cycle
2014:01:07	09:00:00	120.00	00:05	03	001/999
2014:01:07	09:00:10	120.01	00:05	03	001/999
2014:01:07	09:00:20	120.01	00:05	03	001/999
2014:01:07	09:00:30	120.00	00:05	03	001/999

Performance & Convenience

▶ Construction



- ▶ Durable epoxy powdercoated metallic casing
- ▶ Ventilation damper
- ▶ 내구성이 뛰어난 에폭시 분체 도장
- ▶ 수분 및 증기 배출 배기구 장착

▶ Chamber



- ▶ Corrosion resistant Stainless Steel 304 chamber with seamless round cornered edge allows easy cleaning and prevent leakage
- ▶ 내부식성이 뛰어난 Stainless Steel 304 재질의 챔버 코너는 이음새없이 라운드 처리 되어 있어 세척이 간편

▶ Door Window



- ▶ Double layered glass window for easy observation of samples
- ▶ Non-contact door switch cut-off heater and blower
- ▶ 이중 강화유리 도어 투시창
- ▶ 비접촉식 도어센서 장착, 도어 개방시 히터 및 팬 동작 정지

▶ Removable Shelf



- ▶ Removable and height adjustable Stainless Steel Wire Shelf
- ▶ 25mm 간격으로 높이 조절 가능한 스테인레스 스틸 와이어 선반

Safety



- ▶ DUAL OVER TEMP. CUT-OFF
 - 1) Digital system cut-off heater and AUDIO VISUAL ALARM in case +2°C above set temperature
 - 2) Analog system cut-off heater 10% above set temp.
- ▶ MAX TEMP CUT-OFF heater and AUDIO VISUAL ALARM when +1°C above maximum limit
- ▶ DOOR SENSOR : Non-contact magnetic door switch cut-off heater and/or blower when door opened
- ▶ SENSOR DISCONNECTION ALARM
- ▶ OVER CURRENT CUT-OFF : Electrical Leakage Breaker

▶ 이중과열방지장치

- 1) 설정 온도 +2 °C 초과 시 히터 차단 및 시청각 알람
- 2) 콘트롤러 오류로 지정 온도 10% 초과 시 히터 차단

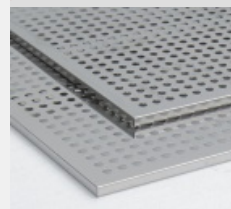
▶ 최고온도알람기능 : 작동한계 온도 +1°C 초과시 히터 차단

▶ 도어스위치 : 도어를 열면 히터와 팬이 정지하여 열기로 부터 사용자를 보호하고 과열 방지

▶ 센서단락알람

▶ 누전차단기 : 전기누설 시 주전원 차단

▶ Option



- ▶ Stainless Steel 304 Perforated Shelf
- ▶ Stainless Steel 304 타공 선반

Laboratory

STANDARD OVENS



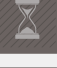

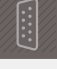

UPRIGHT CONVECTION

Large Capacity

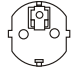


Upright Convection Oven

Upright Forced Convection Oven provides a big volume of chamber for large scale laboratory or industrial purpose. Nevertheless its large volume, dual heating system on upper and lower compartment with two separate heating elements and blowers provide better air circulation throughout the chamber to achieve excellent temperature uniformity and faster heat up time.



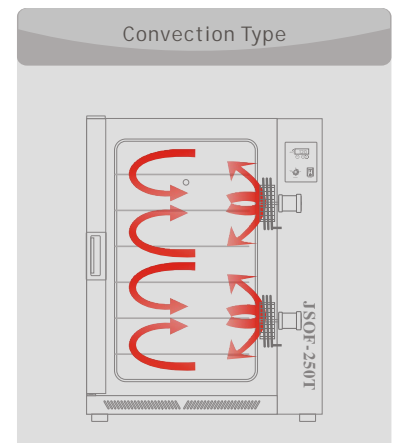
-  Max 250 °C
-  Constant Temperature Controller
-  Timer On / Off 
-  [OPTION] RS-232C Serial Computer Interface
-  [OPTION] Program Controller with PC Control Software

Specifications

Heating	Forced Air Convection Dual Heating Chamber System
Temp. Range	ambient + 10 °C ~ 250 °C
Accuracy	± 0.2 °C at 120°C (JSOF-250T)
Uniformity	± 2.0 °C at 120°C (JSOF-250T)
Control	Microprocessor PID Control Auto START / STOP Timer
Sensor	Class APt-100 Ω Sensor
Safety	Over-Temperature Cut-Off Over Current Cut-Off
Material	Body : Epoxy Powder Coated Steel Chamber : Stainless Steel 304 Insulation : 50mm Woven Mineral Wool Floor Standing with Caster Including Stainless Steel Wire Shelf
Electric	220 ± 10% VAC 50/60Hz 1-Phase
Plug config.	 or  or  <small>CEE 7/7 Schuko BS 1363 30 Amp</small>

Control Accuracy

- ± 0.1 °C Digital PID Controller with automatic START/STOP timer max. 99min 59sec / 99hr 59min / 99 day 23hr
- Temperature calibration, auto-tuning function
- Class APt-100 Ω sensor
- 정밀한 PID 컨트롤러는 온도를 ±0.1 °C 단위로 제어
- 예약 / 정지 타이머 내장 99분59초 / 99시간59분 / 99일23시간
- 온도보정, 오토튜닝 기능 내장
- Class A Pt-100 Ω 온도 센서



Performance

- ▶ DUAL heating system located on upper and lower compartment with two separate heating elements and blowers provide better air circulation throughout the chamber to achieve excellent temperature uniformity and faster heat up time
- ▶ Separate heating compartment located on side wall prevents contamination and maintenance free

- ▶ 대용량 챔버에 적합하도록 상하로 분리된 두 개의 개별적인 가열시스템으로 설계 되어 우수한 온도 균일성과 신속한 건조
- ▶ 가열 챔버가 측면에 위치 하여 액체 흘림으로 인한 오염과 고장이 적음

Convenience

- ▶ Floor standing large capacity oven provides more throughput and productivity of sample treatment
- ▶ Double layered tempered safety glass window for easy observation of samples under testing
- ▶ Stainless Steel 304 Chamber with seamless round cornered edge allows easy cleaning and prevents leakage
- ▶ Removable and height adjustable shelf by 25mm spacing
- ▶ Easy to open and air-tight one touch door latch
- ▶ Opening size adjustable ventilation damper
- ▶ Non-contact door switch cut-off heater and blower
- ▶ Caster for easy transport

- ▶ 대량의 시료를 효율적으로 처리
- ▶ 이중 강화유리 도어 투시창으로 도어를 열지 않고 샘플 관찰
- ▶ 챔버의 코너는 이음새 없이 라운드 처리 되어 있어 세척이 간편하고 오염 방지
- ▶ 25mm 간격으로 높이 조절 가능한 선반
- ▶ 원터치 방식의 도어 잠금 장치
- ▶ 수분 및 증기를 배출할 수 있는 배기구 장착
- ▶ 비접촉식 도어센서 장착, 도어 개방 시 히터 및 팬 동작 정지

Safety

- ▶ DUAL OVER TEMP. CUT-OFF
- ▶ MAX TEMP CUT-OFF
- ▶ DOOR SENSOR
- ▶ SENSOR DISCONNECTION ALARM
- ▶ OVER CURRENT CUT-OFF : Electrical Leakage Breaker

Options

Art No.	Descriptions
OEC-001	JSC-1D Digital PID Controller /w RS-232C Interface, PC Software
OEC-003	JSC-3D Programmable Controller 1 Pattern 11 Segments /w RS-232C Interface, PC Software
OEC-005	JSC-5D Programmable Controller 5 Patterns 80 Segments

Accessories

Art No.	Descriptions
	Perforated Shelf, Stainless Steel 304
PHS-A06	for JSOF-250T W470 x D480mm
PHS-A11	for JSOF-400T W580 x D590mm
PHS-A15	for JSOF-700T W680 x D690mm
	Wire Shelf, Stainless Steel 304
PHS-B06	for JSOF-250T W470 x D480mm
PHS-B11	for JSOF-400T W580 x D590mm
PHS-B12	for JSOF-700T W680 x D690mm
PHS-A99	Shelf Support, Set of 4

Ordering Information

	JSOF-250T	JSOF-400T	JSOF-700T
Chamber Volume (Capacity)	250 L	372 L	655 L
Dimensions Inner	500 x 500 x 1000	610 x 610 x 1000	710 x 710 x 1300
W x D x H mm Outer	895 x 675 x 1360	1005 x 785 x 1360	1105 x 885 x 1660
Window	W150 x H460	W150 x H460	W150 x H615
Temperature Range	ambient +10 °C to 250 °C		
Accuracy at 120°C	± 0.3 °C	± 0.3 °C	± 0.3 °C
Uniformity at 120°C	± 1.5 °C	± 2.0 °C	± 3.0 °C
Heat up time to 120°C	10 min.	15 min.	15 min.
No. of Shelves / Maximum No.	3 / 36	4 / 36	6 / 48
No. of Ventilation damper	1	1	1
Heater Capacity	2 x 1.5 kW	2 x 1.7 kW	2 x 2.5 kW
Power Rating	13.8 Amp	15.6 Amp	22.9 Amp
Power Plug	CEE 7/7 Schuko	30 Amp	30 Amp